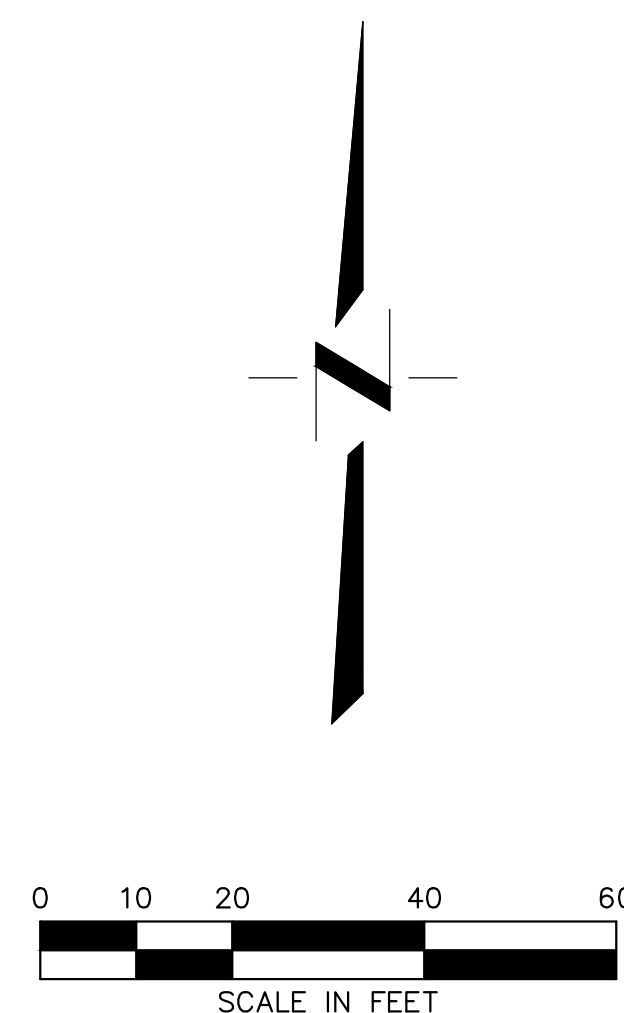


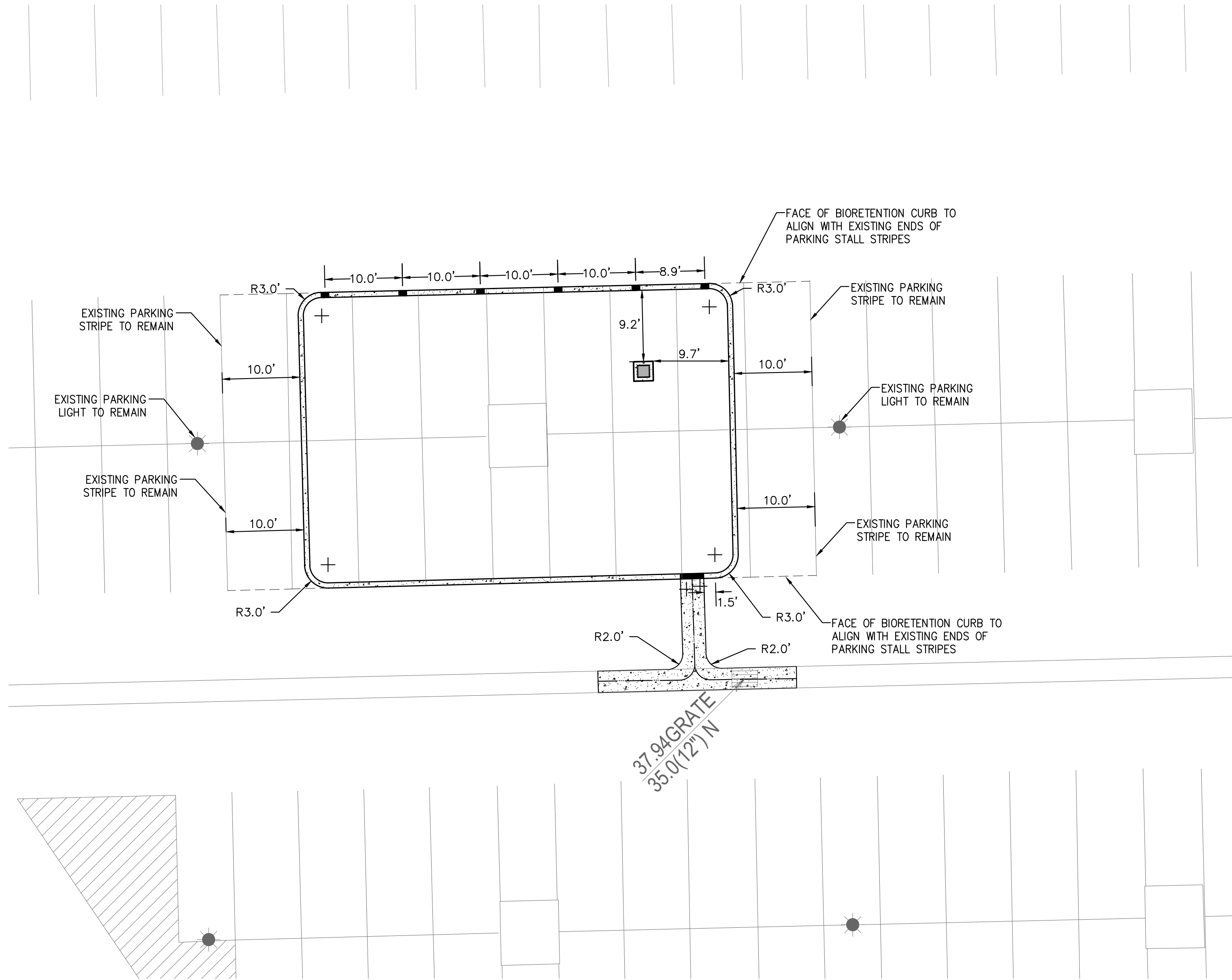
KEY MAP
NTS



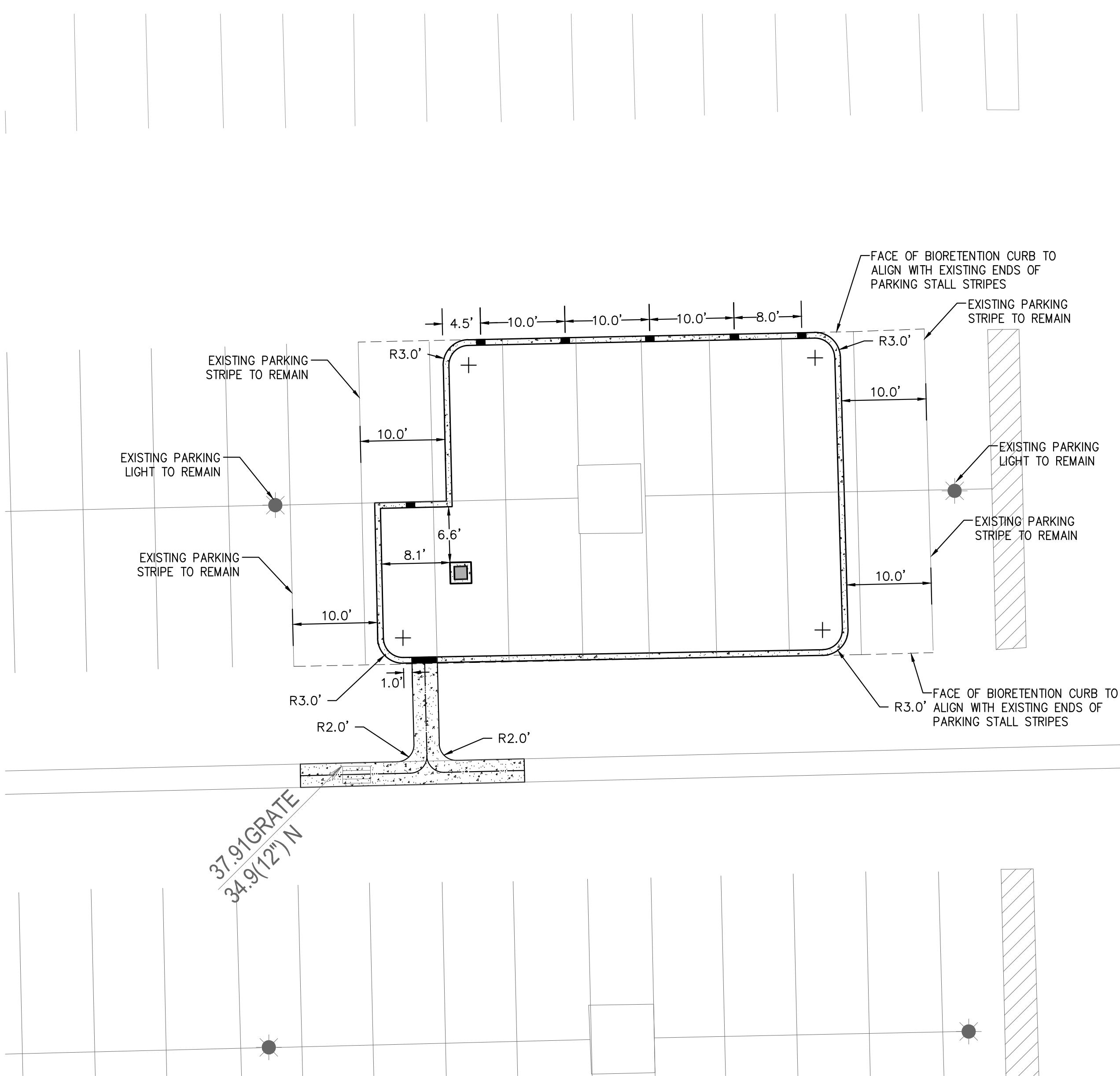
DATE SIGNED: _____
THESE DRAWINGS ARE NOT
CONSIDERED FINAL UNTIL THE
ENGINEER'S SEAL BELOW HAS
BEEN SIGNED AND DATED.



CECWEST.COM				DESIGNED BY	NC
Project Planning • Civil Engineering • Landscape Architecture				DRAWN BY	NC
■ Sacramento Office 2120 20th Street, Suite 200 Sacramento, CA 95818 (916) 455-2026				CHECKED BY	DF
■ Davis Office 2840 Spafford Street, Suite 200 Davis, CA 95618 (530) 758-2026				SCALE 1" = 20'	
CUNNINGHAM ENGINEERING					
CALIFORNIA STATE UNIVERSITY, SACRAMENTO					
CONSTRUCTION DOCUMENTS CSUS LID STORMWATER SYSTEM LOT 10 SITE PLAN					
SHEET L10-C1 OF 7					
DATE: 4/24/2015					
JOB NO: 1432.01					



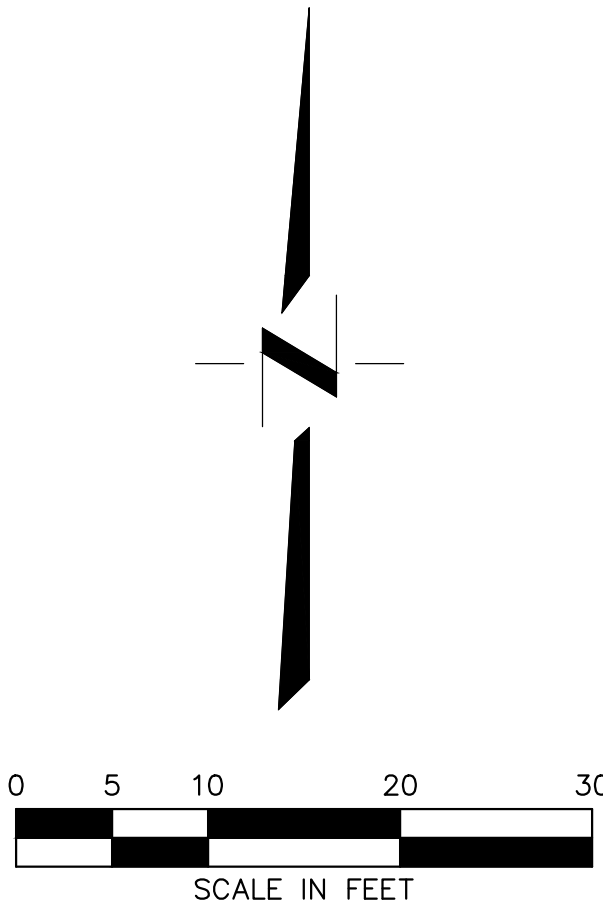
LOT 10 - BR-1
BIORETENTION PLANTER 1"=10'



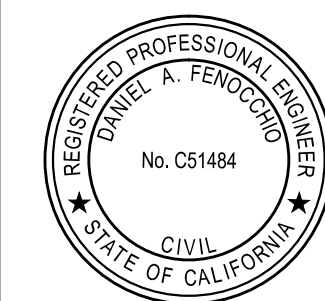
LOT 10 - BR-2
BIORETENTION PLANTER 1"=10'

NOTES

1. REFER TO SHEET L10-C1 FOR SITE CONTROL.
2. LOT 10 BMP CONTROLS ARE BASED ON DIMENSIONS FROM EXISTING PAVEMENT MARKINGS, AS SHOWN.



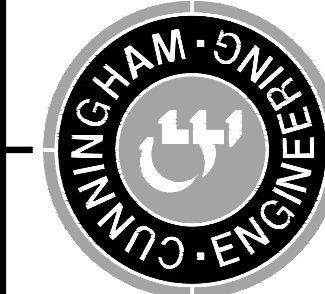
DATE SIGNED: _____
THESE DRAWINGS ARE NOT
CONSIDERED FINAL UNTIL THE
ENGINEER'S SEAL BELOW HAS
BEEN SIGNED AND DATED.



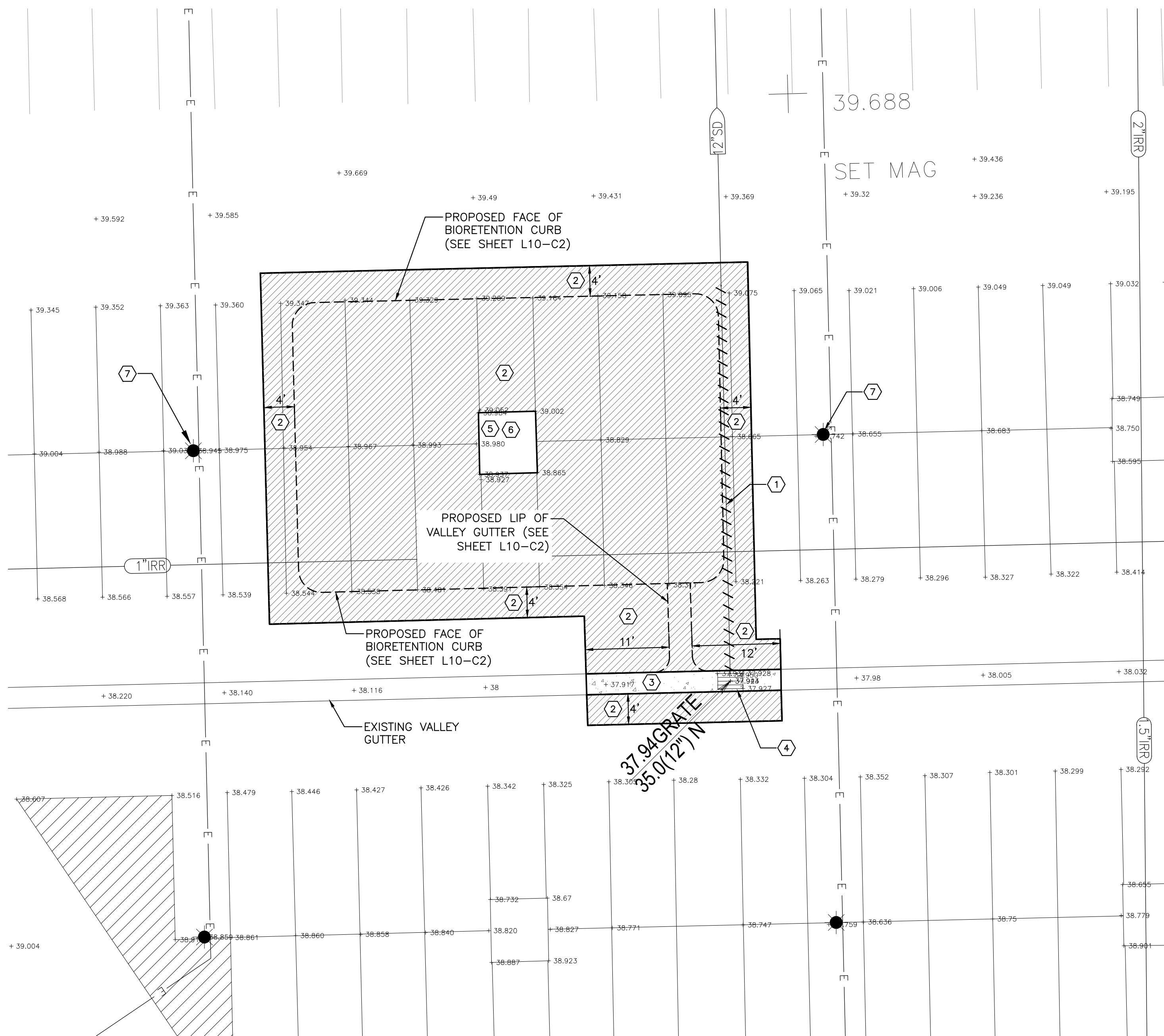
CONSTRUCTION DOCUMENTS
CSUS LID STORMWATER SYSTEM
LOT 10 HORIZONTAL CONTROL PLAN

SHEET
L10-C2
OF
7
DATE: 4/24/2015
JOB NO: 1432.01

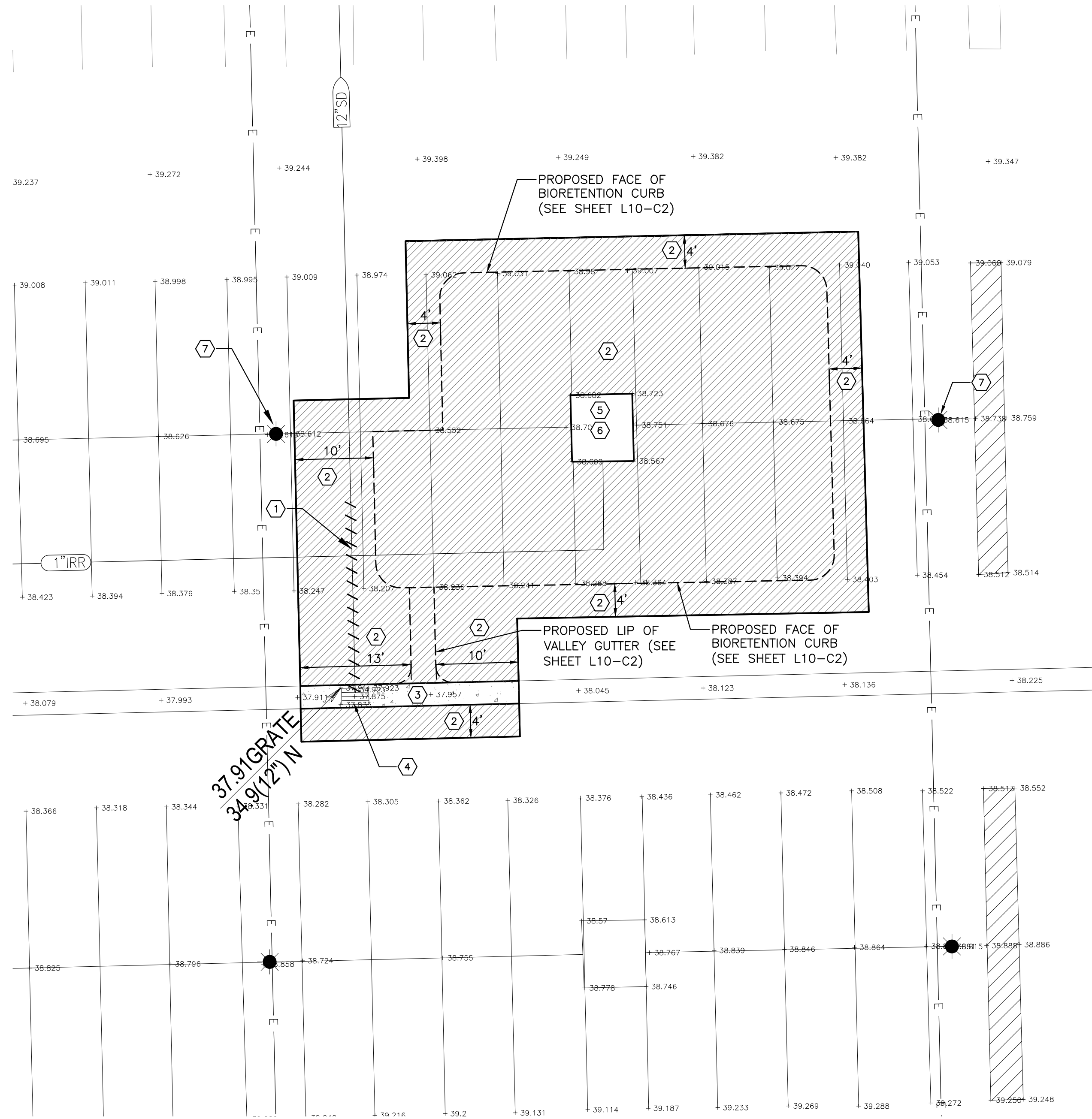
CEWEST.COM
Project Planning • Civil Engineering • Landscape Architecture
Sacramento Office
2120 20th Street, Suite 200
Sacramento, CA 95818
(916) 455-2026
Davis Office
2840 Spafford Street, Suite 200
Davis, CA 95618
(530) 758-2026



NO.	DATE	REVISIONS	BY	APPD.	DESIGNED BY	DRAWN BY	CHECKED BY	SCALE
					NC	NC	DF	1"=10'



LOT 10 - BR-1
BIORETENTION PLANTER 1"=10'



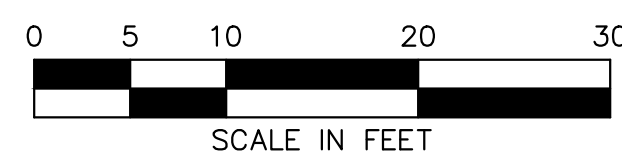
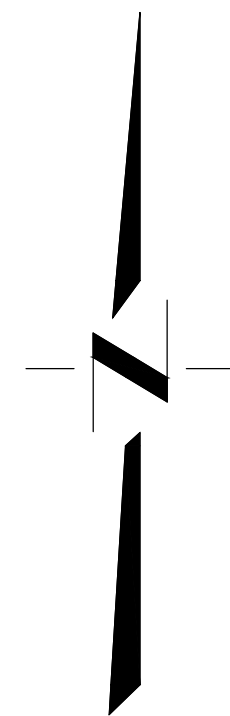
LOT 10 - BR-2
BIORETENTION PLANTER 1"=10'

KEYNOTES:

- ① CONTRACTOR SHALL REMOVE EXISTING 12" ACP STORM DRAIN LINE TO LIMITS SHOWN.
- ② SAWCUT AND REMOVE EXISTING A.C. PAVEMENT.
- ③ SAWCUT AND REMOVE EXISTING VALLEY GUTTER TO LIMITS SHOWN.
- ④ REMOVE EXISTING DRAIN INLET.
- ⑤ REMOVE EXISTING WHEEL STOPS.
- ⑥ REMOVE EXISTING TREE.
- ⑦ EXISTING LIGHT TO REMAIN. CONTRACTOR SHALL PROTECT DURING CONSTRUCTION.

NOTES:

1. INTENT OF DEMOLITION PLAN IS TO PROVIDE GENERAL SITE DEMOLITION REQUIREMENTS TO CONTRACTOR. PLAN IS NOT INTENDED TO PROVIDE DETAILED INFORMATION ON SITE REMOVAL, PROTECTION AND PHASING. CONTRACTOR SHALL BE RESPONSIBLE FOR PERFORMING SITE VISITS TO DEVELOP A DETAILED DEMOLITION PLAN IN ACCORDANCE WITH THE PROPOSED SITE IMPROVEMENTS.
2. SITE DEMOLITION INCLUDES:
 - REMOVE EXISTING ASPHALT PAVEMENT AND CONCRETE VALLEY GUTTER.
 - REMOVE AND PROPERLY DISPOSE OF EXISTING ACP STORM DRAIN PIPE AND DRAIN INLET.
 - REMOVE EXISTING TREE INCLUDING ROOTS.
 - REMOVE/ADJUST EXISTING ABOVE GROUND AND UNDERGROUND IRRIGATION FACILITIES. COORDINATE EXTENT OF IMPROVEMENTS WITH LANDSCAPE PLANS
3. CONTRACTOR SHALL DISPOSE OF ALL MATERIALS PROPERLY OFFSITE.
4. LIMITS OF REMOVAL SHOWN ON THESE PLANS ARE APPROXIMATE. CONTRACTOR SHALL MODIFY LIMITS OF DEMOLITION AS NECESSARY TO PROVIDE FOR NEW CONSTRUCTION, BASED ON CONTRACTOR'S METHOD OF CONSTRUCTION.
5. CONTRACTOR SHALL PROVIDE TRAFFIC CONTROL FLAGGING FOR VEHICULAR INGRESS/EGRESS.
6. PROJECT VEHICULAR AND PEDESTRIAN ACCESS PLAN SHALL BE PREPARED BY CONTRACTOR.



DATE SIGNED: _____
THESE DRAWINGS ARE NOT
CONSIDERED FINAL UNTIL THE
ENGINEER'S SEAL BELOW HAS
BEEN SIGNED AND DATED.



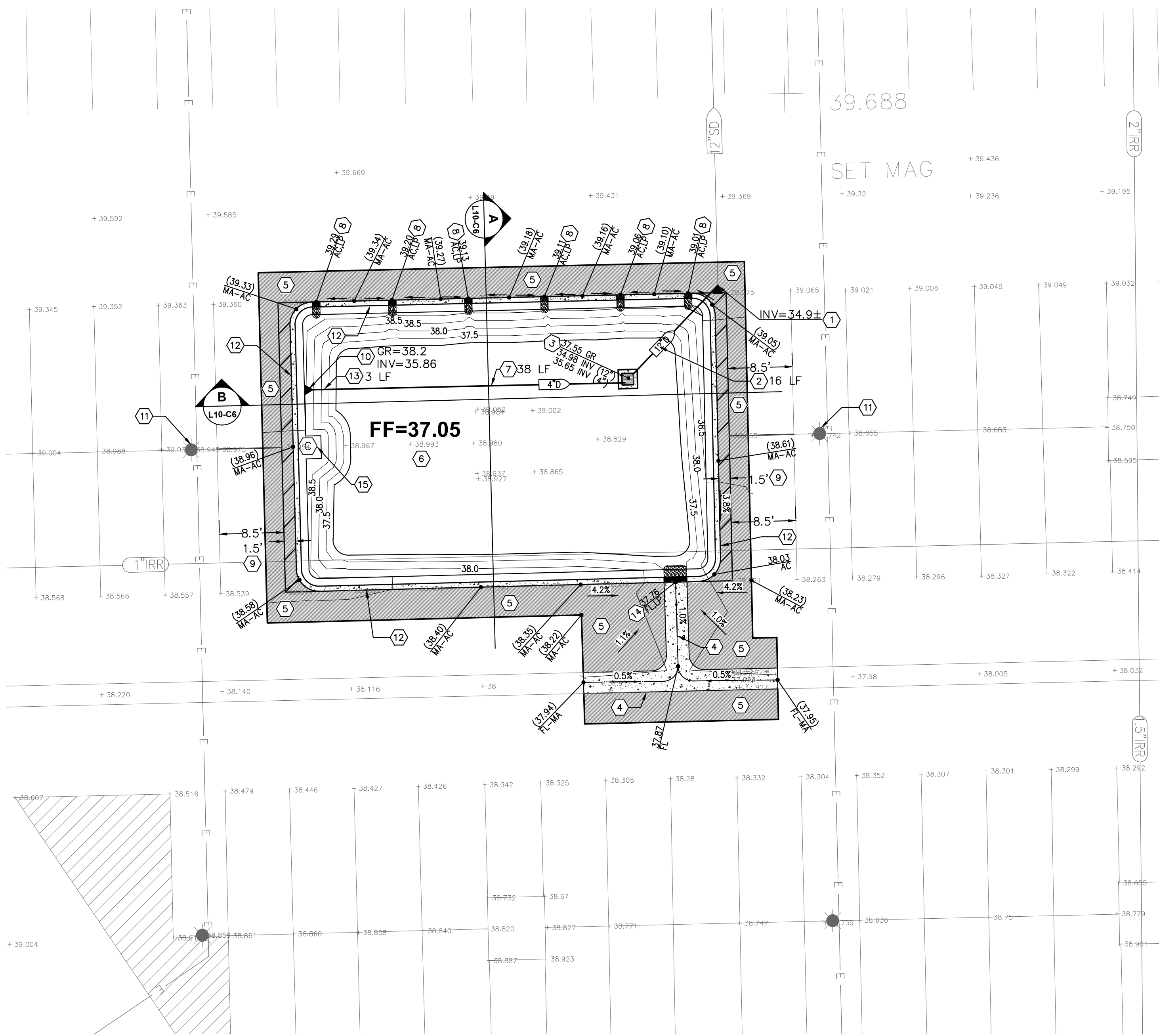
CONSTRUCTION DOCUMENTS
CSUS LID STORMWATER SYSTEM
LOT 10 DEMOLITION PLAN

SHEET
L10-C3
OF
7
DATE: 4/24/2015
JOB NO: 1432.01

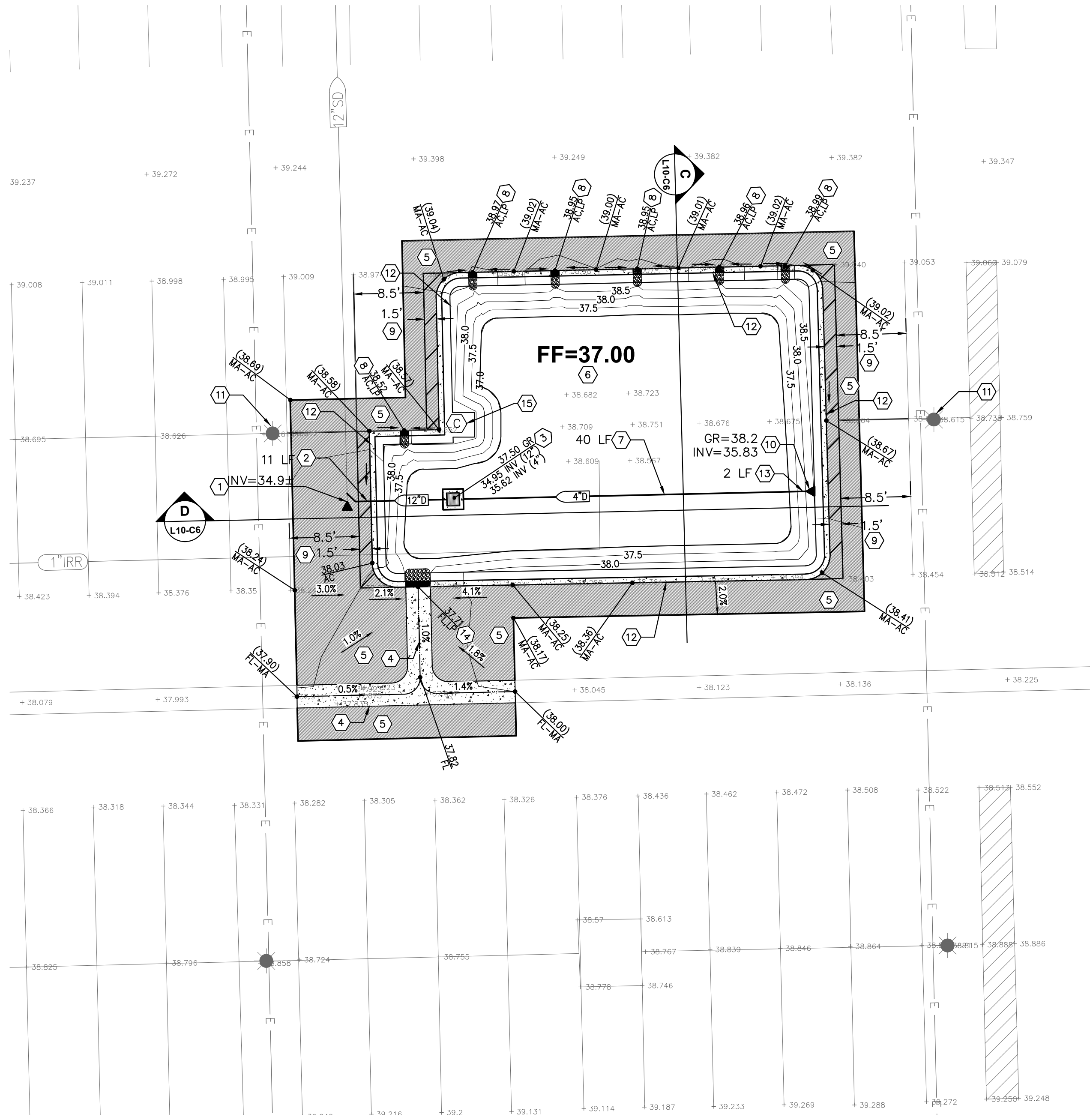
CECWEST.COM
Project Planning • Civil Engineering • Landscape Architecture
■ Davis Office
■ Sacramento Office
2120 20th Street, Suite 200
Davis, CA 95618
Sacramento, CA 95818
(530) 758-2026
(916) 455-2026

DESIGNED BY	NC
DRAWN BY	NC
CHECKED BY	DF
SCALE	1"=10'

NO.	DATE	REVISIONS	BY	APPRO.



LOT 10 - BR-1
BIORETENTION PLANTER 1"=10'



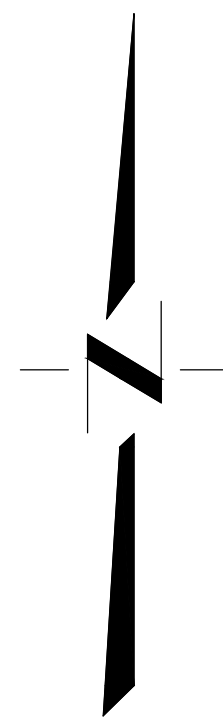
LOT 10 - BR-2
BIORETENTION PLANTER 1"=10'

KEYNOTES:

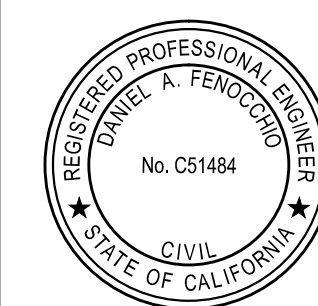
- CONTRACTOR SHALL LOCATE EXISTING 12" ACP LINE AND INSTALL CLEANOUT PER DETAIL 4 ON SHEET L10-C7. CONTRACTOR SHALL FIELD VERIFY EXISTING STORM DRAIN LINE, SIZE, LOCATION AND INVERT PRIOR TO CONSTRUCTION. CONTACT DESIGN ENGINEER IF ACTUAL FIELD CONDITIONS VARY FROM INFORMATION SHOWN ON PLAN.
- INSTALL 12" PVC STORM DRAIN PIPE @ S=0.005. LENGTH PER PLAN.
- INSTALL NEW BIORETENTION DRAIN INLET PER DETAIL 1 ON SHEET L10-C7.
- INSTALL NEW VALLEY GUTTER PER DETAIL 2 ON SHEET L10-C7.
- INSTALL A.C. PAVEMENT. NEW PAVEMENT SECTION TO MATCH EXISTING (MINIMUM 4" A.C. OVER 8" A.B. OVER COMPACTED SUBGRADE).
- CONSTRUCT BIORETENTION AREA PER SECTIONS AND DETAILS.
- INSTALL 4" PERFORATED HDPE STORM DRAIN PIPE SURROUNDED IN 6" (MINIMUM) GRAVEL @ S=0.005. LENGTH PER PLAN.
- INSTALL 12" WIDE BIORETENTION CURB OPENING PER DETAIL 3 ON SHEET L10-C7.
- PLACE NEW PAVEMENT MARKING. PROVIDE 4" WHITE HATCH LINES SPACED 3' ON CENTER WITH A 4" WHITE BORDER.
- INSTALL STORM DRAIN CLEANOUT PER DETAIL 4 ON SHEET L10-C7.
- EXISTING LIGHT TO REMAIN. CONTRACTOR SHALL PROTECT DURING CONSTRUCTION.
- INSTALL BIORETENTION PLANTER CURB PER DETAIL 5 ON SHEET L10-C7.
- INSTALL 4" HDPE STORM DRAIN PIPE @ S=0.005. LENGTH PER PLAN.
- INSTALL 36" WIDE BIORETENTION CURB CURB OPENING PER DETAIL 3 ON SHEET L10-C7.
- IRRIGATION CONTROLLER - SEE LANDSCAPE PLANS. PROVIDE A 3' X 3' LEVEL AREA.

NOTES:

- CONTRACTOR SHALL ADJUST ALL EXISTING UTILITY STRUCTURES (SHOWN AND NOT SHOWN) TO FINAL GRADE. CONTRACTOR SHALL PERFORM SITE WALK PRIOR TO CONSTRUCTION TO VERIFY ALL EXISTING UTILITY STRUCTURE LOCATIONS. COST OF UTILITY STRUCTURE ADJUSTMENT SHALL BE INCLUDED IN BASE BID.
- THE TYPES, LOCATIONS, SIZES AND/OR DEPTHS OF EXISTING UTILITIES SHOWN ON THESE PLANS WERE OBTAINED FROM SOURCES OF VARYING RELIABILITY. THE CONTRACTOR IS CAUTIONED THAT ONLY ACTUAL EXCAVATION WILL REVEAL THE TYPES, EXTENT, SIZE, LOCATION AND DEPTH OF SUCH UNDERGROUND FACILITIES. HOWEVER, THE ENGINEER CAN ASSUME NO RESPONSIBILITY FOR THE COMPLETENESS OR ACCURACY OF ITS DELINEATION OF SUCH UNDERGROUND FACILITIES NOR FOR THE EXISTENCE OF OTHER BURIED OBJECTS WHICH ARE NOT SHOWN ON THESE PLANS. IF NO ELEVATION IS SHOWN ON THE PLANS THE CONTRACTOR SHALL ASSUME THE ELEVATION IS UNKNOWN.
- LIMITS OF A.C. PAVEMENT REMOVAL AND REPLACEMENT SHOWN ON THESE PLANS ARE APPROXIMATE. CONTRACTOR SHALL CONFIRM EXISTING MATCH GRADES AND EXTEND LIMITS OF REMOVAL AND REPLACEMENT AS NEEDED BASED ON ACTUAL FIELD CONDITIONS IN ORDER TO PROVIDE POSITIVE DRAINAGE TOWARDS BMP AREAS AT A MINIMUM SLOPE OF 1%.
- ALL ASPHALT SURFACE REPAIR OVER UTILITY TRENCH IMPROVEMENTS SHALL BE PERFORMED IN ACCORDANCE WITH CITY OF SACRAMENTO STANDARD DWG. NO. T-80 ON SHEET L10-C7.
- CONTRACTOR SHALL REPLACE ALL EXISTING PAVEMENT MARKINGS DISTURBED DURING CONSTRUCTION IN KIND.



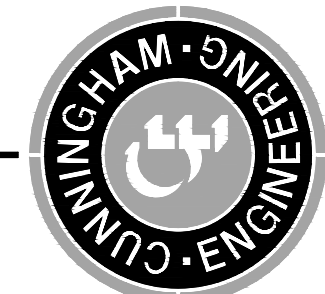
DATE SIGNED: _____
THESE DRAWINGS ARE NOT
CONSIDERED FINAL UNTIL THE
ENGINEER'S SEAL BELOW HAS
BEEN SIGNED AND DATED.



CONSTRUCTION DOCUMENTS CSUS LID STORMWATER SYSTEM LOT 10 IMPROVEMENT PLAN

SHEET
L10-C4
OF
7
DATE: 4/24/2015
JOB NO: 1432.01

CECWEST.COM
Project Planning • Civil Engineering • Landscape Architecture
Davis Office
2840 Spafford Street, Suite 200
Davis, CA 95618
(916) 455-2026



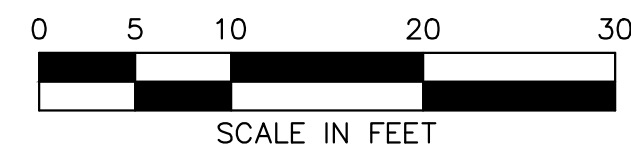
CALIFORNIA STATE UNIVERSITY, SACRAMENTO
S:\Projects\1400\1432 CSUS - LID Storm Water System\AutoCAD\1432-01-Civil_C03\SHEETS\L10 - C4 - IMPROV.dwg - LOT 10 4/17/2015 - 8:14AM Plotted by: choyes

NO.	DATE	REVISIONS	BY	APPRO.	DESIGNED BY	DRAWN BY	CHECKED BY	SCALE
					NC	NC	DF	1"=10'



1 INSTALL STORM DRAIN INLET SEDIMENT CONTROL AND
FILTER BAG PER CITY OF SACRAMENTO STANDARD DWG.
NOs. Q-20 & Q-30.

1. REFER TO SHEET T-3 FOR EROSION CONTROL NOTES.
2. CONTRACTOR SHALL PROVIDE CONCRETE WASHOUT AREA PER CITY OF SACRAMENTO STANDARD DWG. NO. Q-80. CONTRACTOR SHALL COORDINATE LOCATION WITH CSUS REPRESENTATIVE PRIOR TO CONSTRUCTION.
3. CONTRACTOR SHALL COORDINATE WITH CSUS REPRESENTATIVE FOR MATERIAL STORAGE LOCATION PRIOR TO CONSTRUCTION.



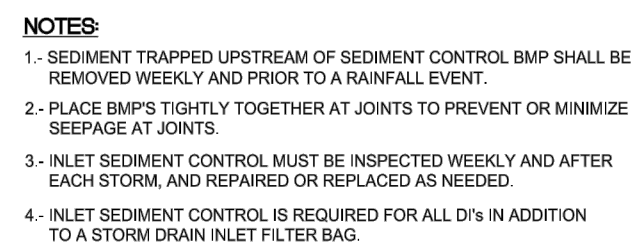
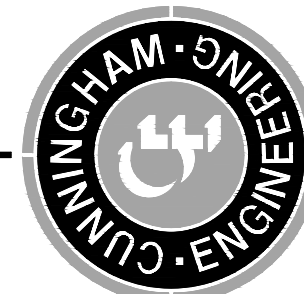
NO.	DATE	REVISIONS	BY	APPD.	DESIGNED BY _____ NC
					DRAWN BY _____ NC
					CHECKED BY _____ DF
					SCALE
					1" = 10'

CECWEST.COM

Project Planning ■ Civil Engineering ■ Landscape Architecture

■ Davis Office
2940 Spafford Street, Suite 200
Davis, CA 95618
(530) 758-2026

■ Sacramento Office
12120 20th Street, Suite Three
Sacramento, CA 95818
(916) 455-2026



REV.	DATE	DESCRIPTION
△		
△		
△		

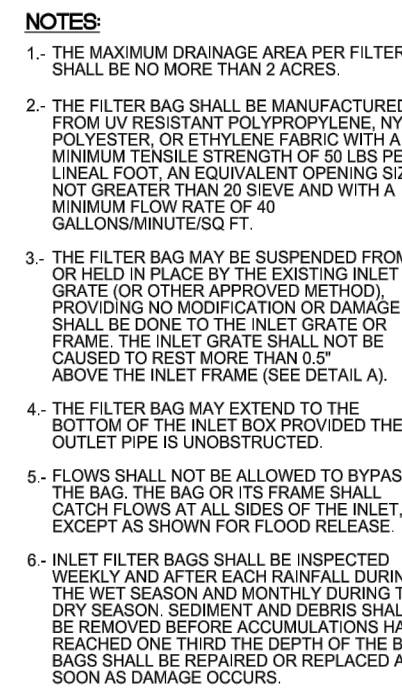
APPR'D BY: DJB NO SCALE

DATE: MAY 2007 DWG. NO. 0-20

CITY OF SACRAMENTO
DEPARTMENT OF UTILITIES

INLET SEDIMENT
CONTROL

APPR'D BY: DOB NO SCALE
DATE: MAY 2007 DWG. NO. Q-20



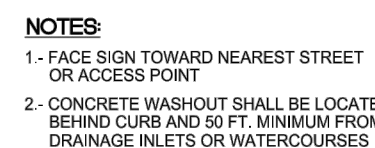
REV.	DATE	DESCRIPTION
△		
△		
△		

APPR'D BY: DOB NO SCALE
 DATE: MAY 2007 DWG. NO. O-30

CITY OF SACRAMENTO
DEPARTMENT OF UTILITIES

STORM DRAIN IN
FILTER BAG

APPR'D BY: DOB NO SCALE
DATE: MAY 2007 DWG. NO. Q-30



REV.	DATE	DESCRIPTION
△		
△		
△		

APPR'D BY: DOB NO SCALE
 DATE: MAY 2007 DWG. NO. **Q-80**

CITY OF SACRAMENTO
DEPARTMENT OF UTILITIES

CONCRETE WASHOUT

APPR'D BY: DOB NO SCALE
DATE: MAY 2007 DWG. NO. Q-80

DATE SIGNED: _____
THESE DRAWINGS ARE NOT
CONSIDERED FINAL UNTIL THE
ENGINEER'S SEAL BELOW HAS
BEEN SIGNED AND DATED.



**CONSTRUCTION DOCUMENTS
CSUS LID STORMWATER SYSTEM
LOT 10 EROSION CONTROL PLAN**

CALIFORNIA

CALIFORNIA STATE UNIVERSITY, SACRAMENTO

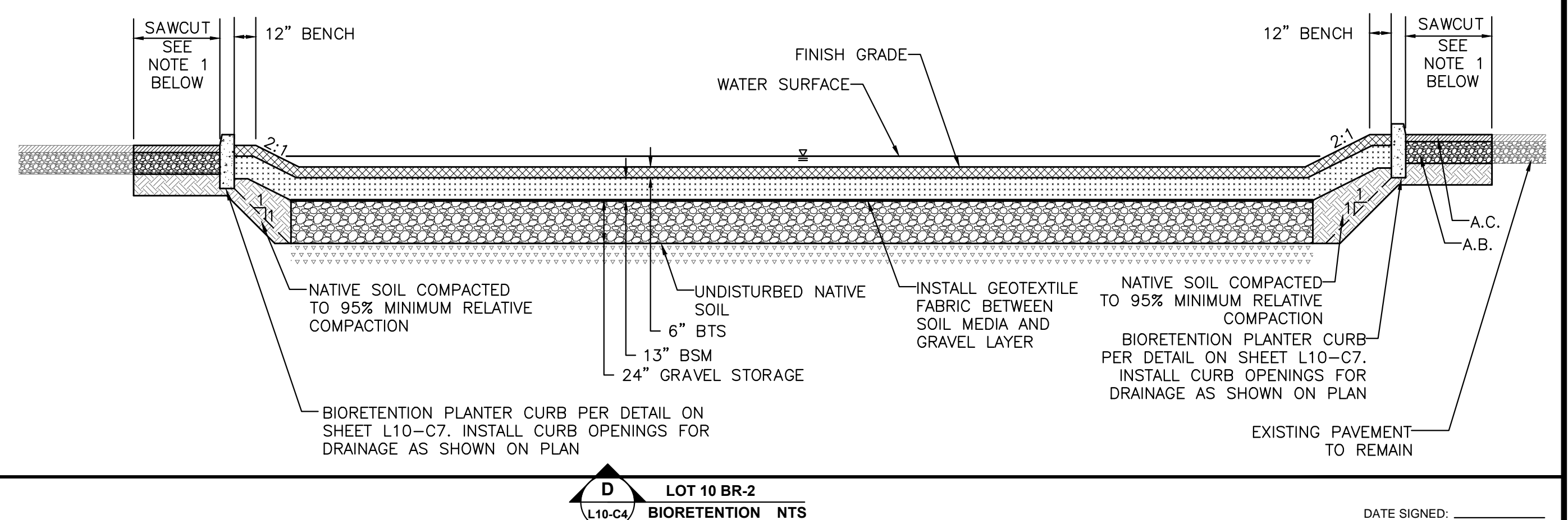
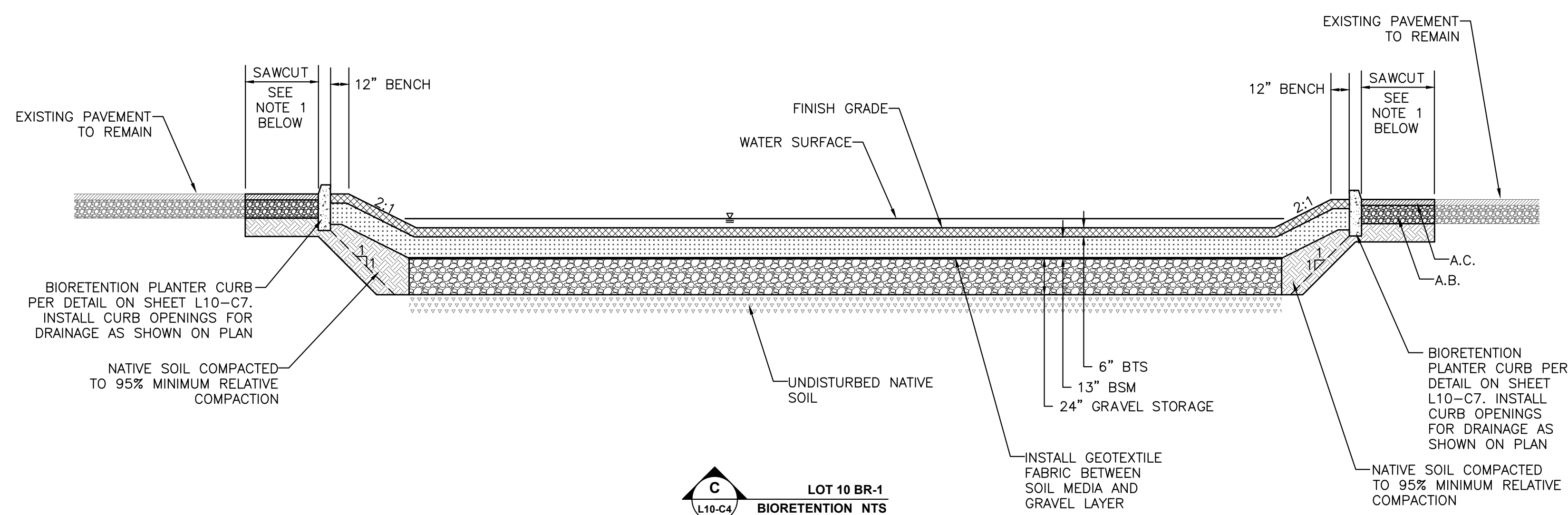
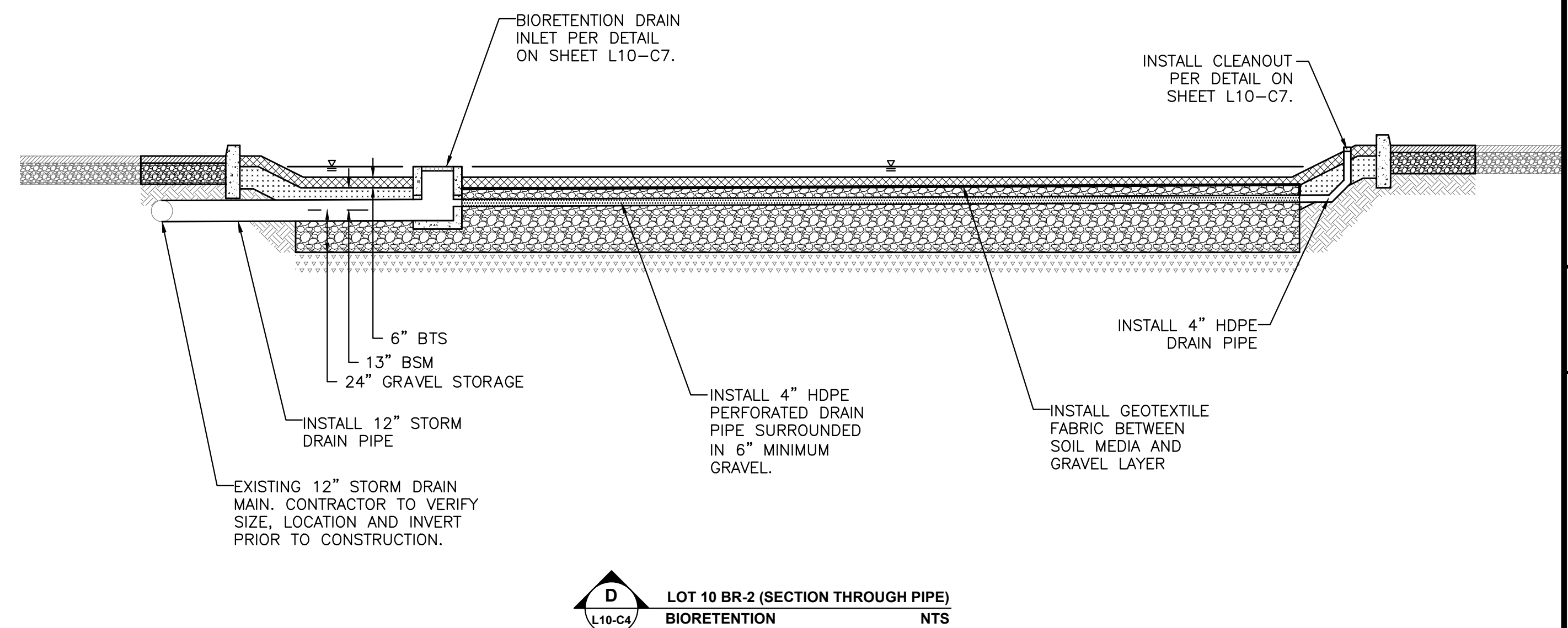
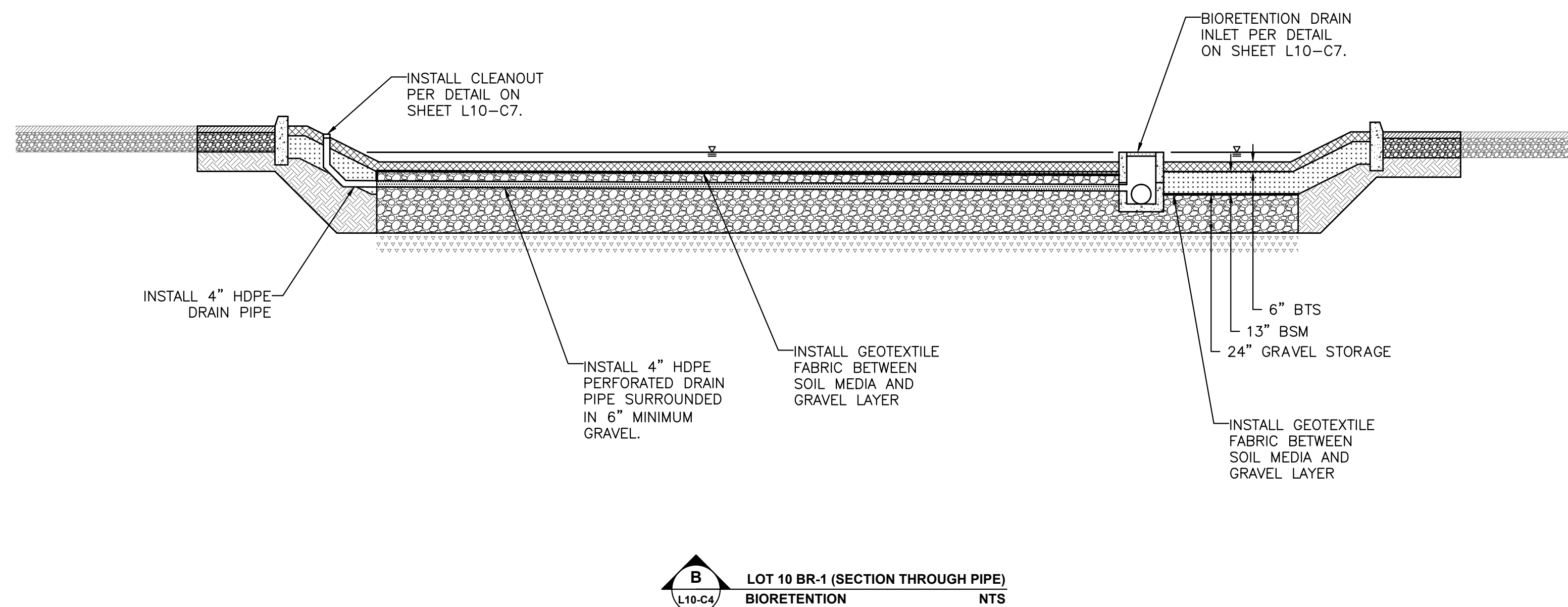
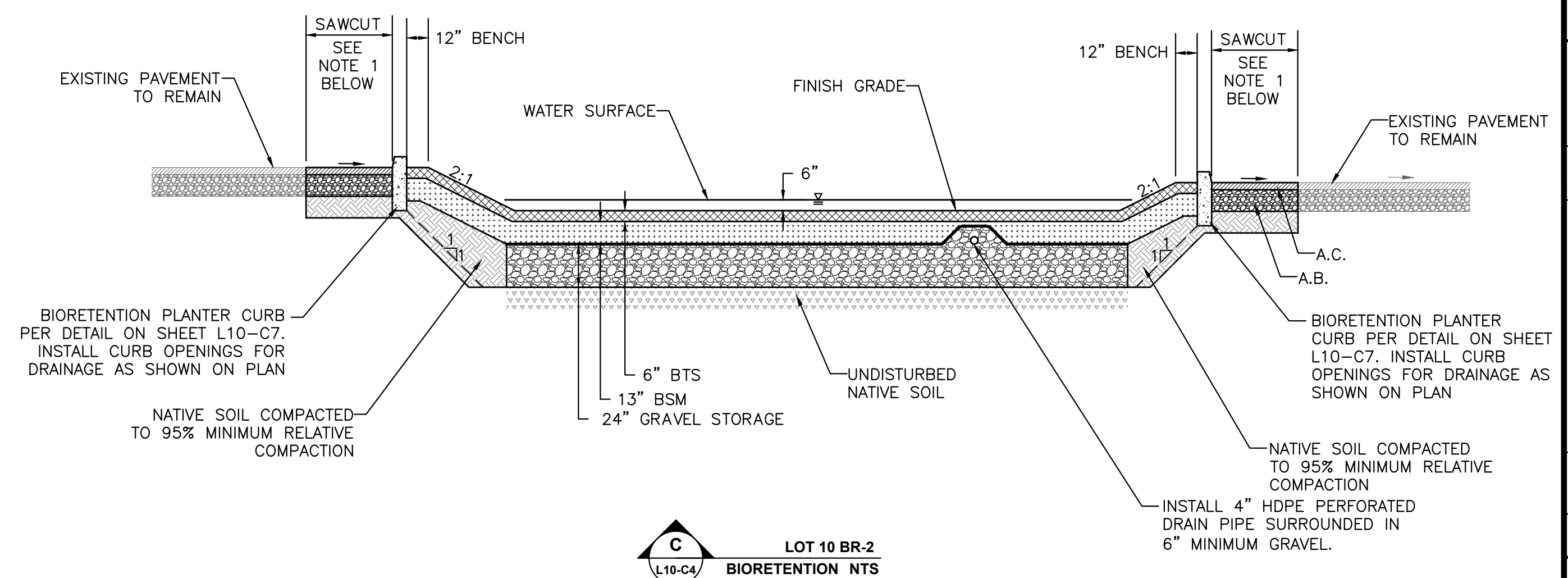
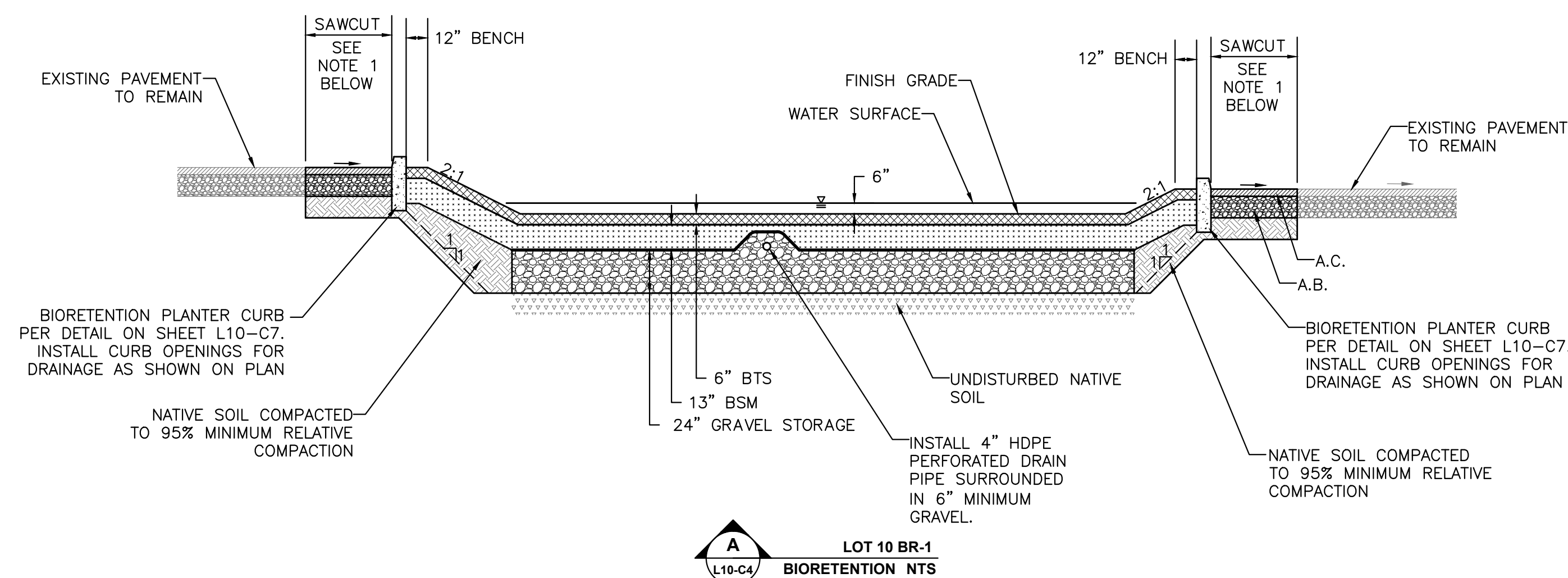
S:\Projects\1400\1432 CSUS - LID Storm Water System\AutoCAD\1432-01-CIVIL CDS - EROS.dwg - LOT 10 4/17/2015 - 8:16AM Plotted by: charles

SHEET
L-10-C5

OF
7

DATE: 4/24/2015

JOB NO: 1432.01



NOTES

NOTES

1. LIMITS OF ASPHALT REMOVAL AND REPLACEMENT SHOWN ON THESE PLANS ARE APPROXIMATE. CONTRACTOR SHALL INCREASE SAWCUT LIMITS AS REQUIRED TO PROVIDE POSITIVE DRAINAGE AT A 1% MINIMUM SLOPE.

DATE SIGNED: _____
THESE DRAWINGS ARE NOT
CONSIDERED FINAL UNTIL THE
ENGINEER'S SEAL BELOW HAS
BEEN SIGNED AND DATED



**CONSTRUCTION DOCUMENTS
CSUS LID STORMWATER SYSTEM
LOT 10 SECTIONS**

SHEET
10-C6

TE: 4/24/2015

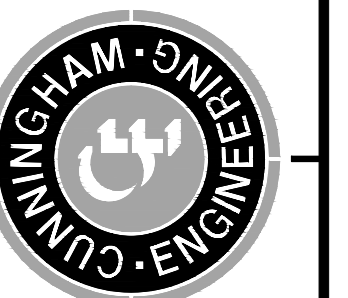
B NO: 1432.01

CECWEST.COM

Project Planning ■ Civil Engineering ■ Landscape Architecture

■ **Sacramento Office**
120 20th Street, Suite Three
Sacramento, CA 95818
(916) 455-2026

■ **Davis Office**
2940 Spafford Street, Suite 200
Davis, CA 95618
(530) 758-2026



CALIFORNIA

CALIFORNIA STATE UNIVERSITY, SACRAMENTO

3. Flooded water system (Flooded = 10, 20, 30, 40, 50, 60, 70, 80, 90, 100, 110, 120, 130, 140, 150, 160, 170, 180, 190, 200, 210, 220, 230, 240, 250, 260, 270, 280, 290, 300, 310, 320, 330, 340, 350, 360, 370, 380, 390, 400, 410, 420, 430, 440, 450, 460, 470, 480, 490, 500, 510, 520, 530, 540, 550, 560, 570, 580, 590, 600, 610, 620, 630, 640, 650, 660, 670, 680, 690, 700, 710, 720, 730, 740, 750, 760, 770, 780, 790, 800, 810, 820, 830, 840, 850, 860, 870, 880, 890, 900, 910, 920, 930, 940, 950, 960, 970, 980, 990, 1000, 1010, 1020, 1030, 1040, 1050, 1060, 1070, 1080, 1090, 1100, 1110, 1120, 1130, 1140, 1150, 1160, 1170, 1180, 1190, 1200, 1210, 1220, 1230, 1240, 1250, 1260, 1270, 1280, 1290, 1300, 1310, 1320, 1330, 1340, 1350, 1360, 1370, 1380, 1390, 1400, 1410, 1420, 1430, 1440, 1450, 1460, 1470, 1480, 1490, 1500, 1510, 1520, 1530, 1540, 1550, 1560, 1570, 1580, 1590, 1600, 1610, 1620, 1630, 1640, 1650, 1660, 1670, 1680, 1690, 1700, 1710, 1720, 1730, 1740, 1750, 1760, 1770, 1780, 1790, 1800, 1810, 1820, 1830, 1840, 1850, 1860, 1870, 1880, 1890, 1900, 1910, 1920, 1930, 1940, 1950, 1960, 1970, 1980, 1990, 2000, 2010, 2020, 2030, 2040, 2050, 2060, 2070, 2080, 2090, 2100, 2110, 2120, 2130, 2140, 2150, 2160, 2170, 2180, 2190, 2200, 2210, 2220, 2230, 2240, 2250, 2260, 2270, 2280, 2290, 2300, 2310, 2320, 2330, 2340, 2350, 2360, 2370, 2380, 2390, 2400, 2410, 2420, 2430, 2440, 2450, 2460, 2470, 2480, 2490, 2500, 2510, 2520, 2530, 2540, 2550, 2560, 2570, 2580, 2590, 2600, 2610, 2620, 2630, 2640, 2650, 2660, 2670, 2680, 2690, 2700, 2710, 2720, 2730, 2740, 2750, 2760, 2770, 2780, 2790, 2800, 2810, 2820, 2830, 2840, 2850, 2860, 2870, 2880, 2890, 2900, 2910, 2920, 2930, 2940, 2950, 2960, 2970, 2980, 2990, 3000, 3010, 3020, 3030, 3040, 3050, 3060, 3070, 3080, 3090, 3100, 3110, 3120, 3130, 3140, 3150, 3160, 3170, 3180, 3190, 3200, 3210, 3220, 3230, 3240, 3250, 3260, 3270, 3280, 3290, 3300, 3310, 3320, 3330, 3340, 3350, 3360, 3370, 3380, 3390, 3400, 3410, 3420, 3430, 3440, 3450, 3460, 3470, 3480, 3490, 3500, 3510, 3520, 3530, 3540, 3550, 3560, 3570, 3580, 3590, 3600, 3610, 3620, 3630, 3640, 3650, 3660, 3670, 3680, 3690, 3700, 3710, 3720, 3730, 3740, 3750, 3760, 3770, 3780, 3790, 3800, 3810, 3820, 3830, 3840, 3850, 3860, 3870, 3880, 3890, 3900, 3910, 3920, 3930, 3940, 3950, 3960, 3970, 3980, 3990, 4000, 4010, 4020, 4030, 4040, 4050, 4060, 4070, 4080, 4090, 4100, 4110, 4120, 4130, 4140, 4150, 4160, 4170, 4180, 4190, 4200, 4210, 4220, 4230, 4240, 4250, 4260, 4270, 4280, 4290, 4300, 4310, 4320, 4330, 4340, 4350, 4360, 4370, 4380, 4390, 4400, 4410, 4420, 4430, 4440, 4450, 4460, 4470, 4480, 4490, 4500, 4510, 4520, 4530, 4540, 4550, 4560, 4570, 4580, 4590, 4600, 4610, 4620, 4630, 4640, 4650, 4660, 4670, 4680, 4690, 4700, 4710, 4720, 4730, 4740, 4750, 4760, 4770, 4780, 4790, 4800, 4810, 4820, 4830, 4840, 4850, 4860, 4870, 4880, 4890, 4900, 4910, 4920, 4930, 4940, 4950, 4960, 4970, 4980, 4990, 5000, 5010, 5020, 5030, 5040, 5050, 5060, 5070, 5080, 5090, 5100, 5110, 5120, 5130, 5140, 5150, 5160, 5170, 5180, 5190, 5200, 5210, 5220, 5230, 5240, 5250, 5260, 5270, 5280, 5290, 5300, 5310, 5320, 5330, 5340, 5350, 5360, 5370, 5380, 5390, 5400, 5410, 5420, 5430, 5440, 5450, 5460, 5470, 5480, 5490, 5500, 5510, 5520, 5530, 5540, 5550, 5560, 5570, 5580, 5590, 5600, 5610, 5620, 5630, 5640, 5650, 5660, 5670, 5680, 5690, 5700, 5710, 5720, 5730, 5740, 5750, 5760, 5770, 5780, 5790, 5800, 5810, 5820, 5830, 5840, 5850, 5860, 5870, 5880, 5890, 5900, 5910, 5920, 5930, 5940, 5950, 5960, 5970, 5980, 5990, 6000, 6010, 6020, 6030, 6040, 6050, 6060, 6070, 6080, 6090, 6100, 6110, 6120, 6130, 6140, 6150, 6160, 6170, 6180, 6190, 6200, 6210, 6220, 6230, 6240, 6250, 6260, 6270, 6280, 6290, 6300, 6310, 6320, 6330, 6340, 6350, 6360, 6370, 6380, 6390, 6400, 6410, 6420, 6430, 6440, 6450, 6460, 6470, 6480, 6490, 6500, 6510, 6520, 6530, 6540, 6550, 6560, 6570, 6580, 6590, 6600, 6610, 6620, 6630, 6640, 6650, 6660, 6670, 6680, 6690, 6700, 6710, 6720, 6730, 6740, 6750, 6760, 6770, 6780, 6790, 6800, 6810, 6820, 6830, 6840, 6850, 6860, 6870, 6880, 6890, 6900, 6910, 6920, 6930, 6940, 6950, 6960, 6970, 6980, 69



-