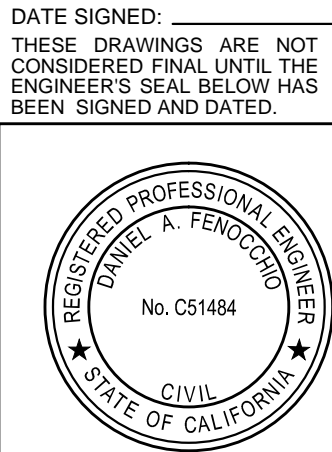


KEYNOTES:

- ① APPROXIMATE LOCATION OF PROPOSED IRRIGATION TRENCH. CONTRACTOR SHALL SAWCUT AND REMOVE EXISTING A.C. PAVEMENT IN ACCORDANCE WITH CITY OF SACRAMENTO STANDARD DWG. NO. T-80 ON SHEET LG-C6. REPLACE A.C. PAVEMENT TO MATCH EXISTING PAVEMENT SECTION (MINIMUM 4" A.C. OVER 8" A.B. OVER COMPACTED SUBGRADE) IN ACCORDANCE WITH CITY OF SACRAMENTO STANDARD DWG. NO. T-80. SEE LANDSCAPE PLANS FOR ACTUAL TRENCH LOCATION.
- ② APPROXIMATE LOCATION OF PROPOSED IRRIGATION TRENCH. CONTRACTOR SHALL SAWCUT EXISTING CURB AT NEAREST JOINTS/SCORE LINES AND REMOVE EXISTING CURB AND ASPHALT PAVEMENT FOR PROPOSED IRRIGATION TRENCH. REPLACE A.C. PAVEMENT TO MATCH EXISTING (MINIMUM 4" A.C. OVER 8" A.B. OVER COMPACTED SUBGRADE). REPLACE CURB TO MATCH EXISTING. SEE LANDSCAPE PLANS FOR ACTUAL TRENCH LOCATION.



DATE SIGNED: _____
THESE DRAWINGS ARE NOT
CONSIDERED FINAL UNTIL THE
ENGINEER'S SEAL BELOW HAS
BEEN SIGNED AND DATED.

**CONSTRUCTION DOCUMENTS
CSUS LID STORMWATER SYSTEM
LIBRARY GREEN
SITE PLAN**

SHEET
LG-C1

OF
6

DATE: 4/24/2015

JOB NO: 1432.01

CECWEST.COM

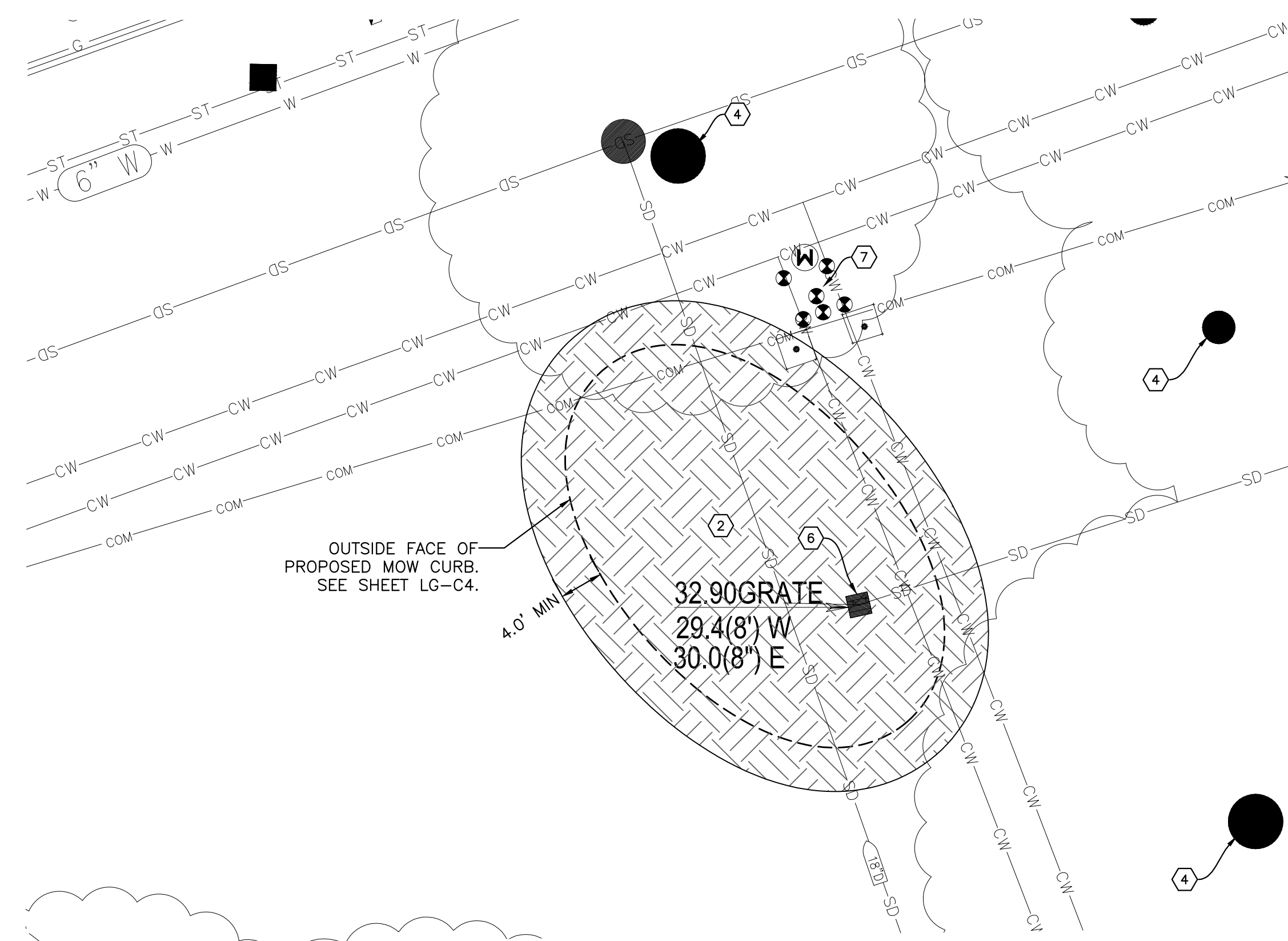
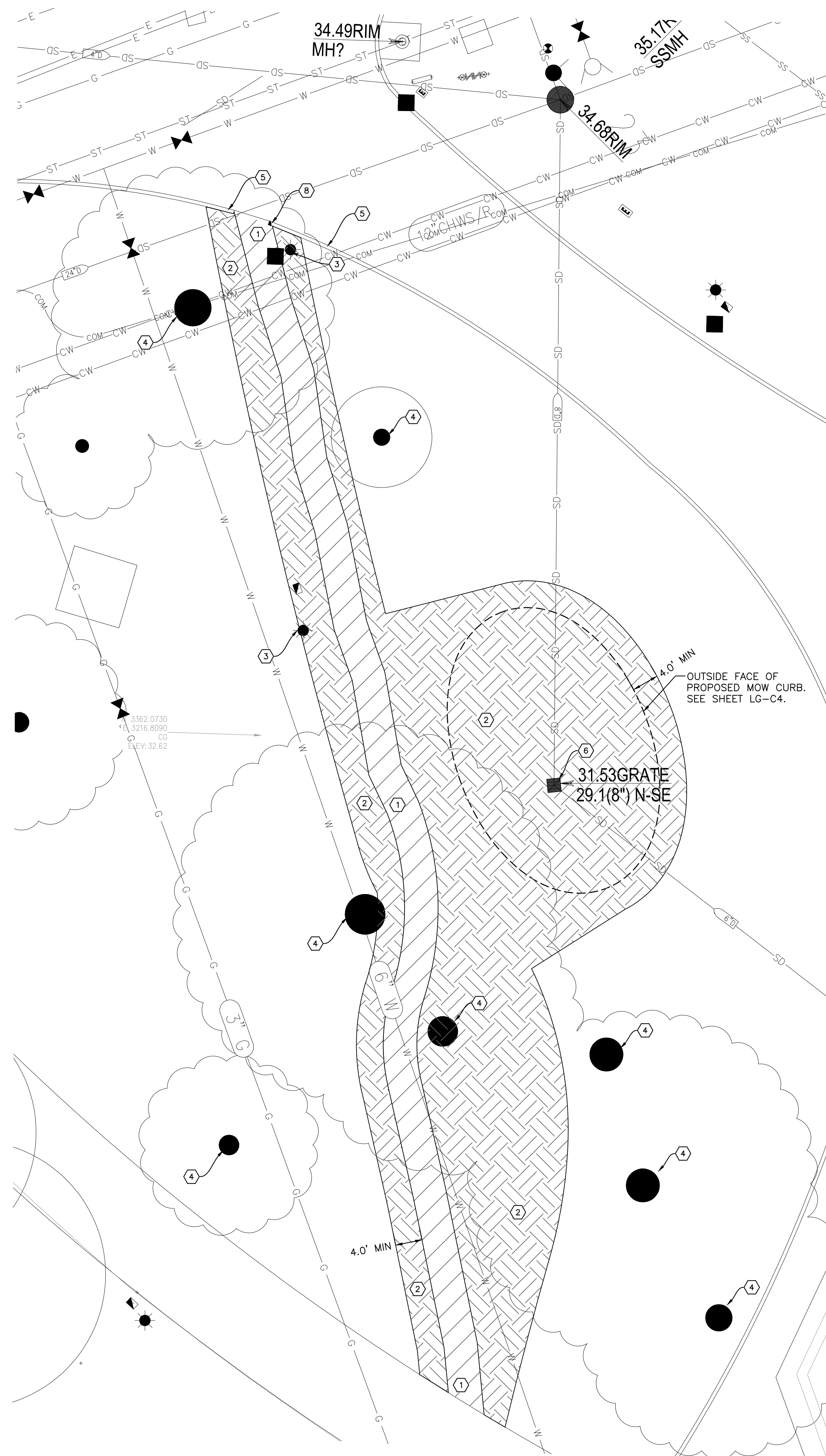
Project Planning • Civil Engineering • Landscape Architecture

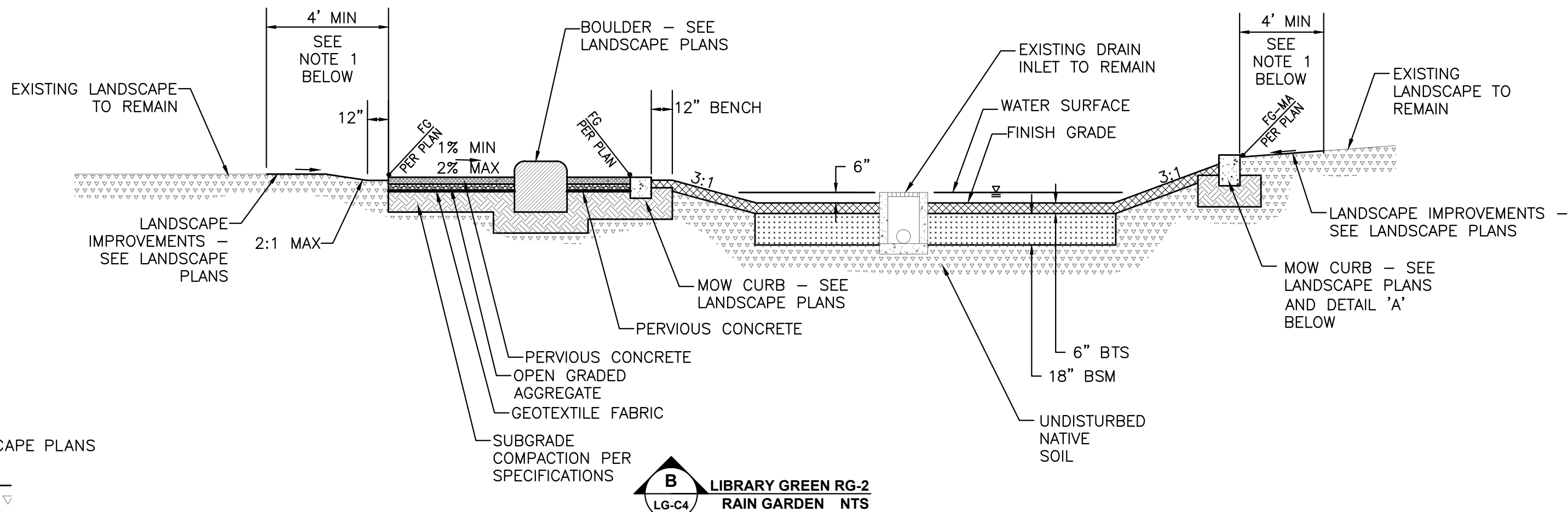
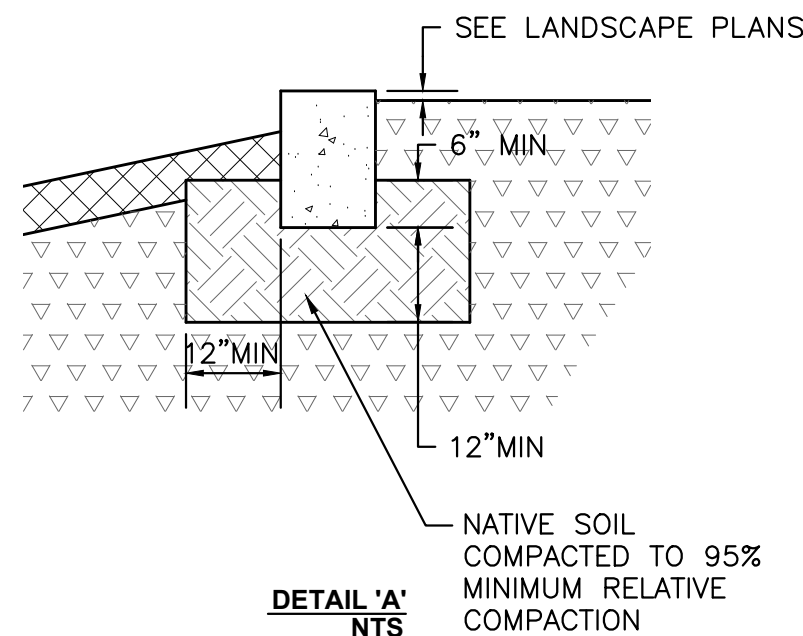
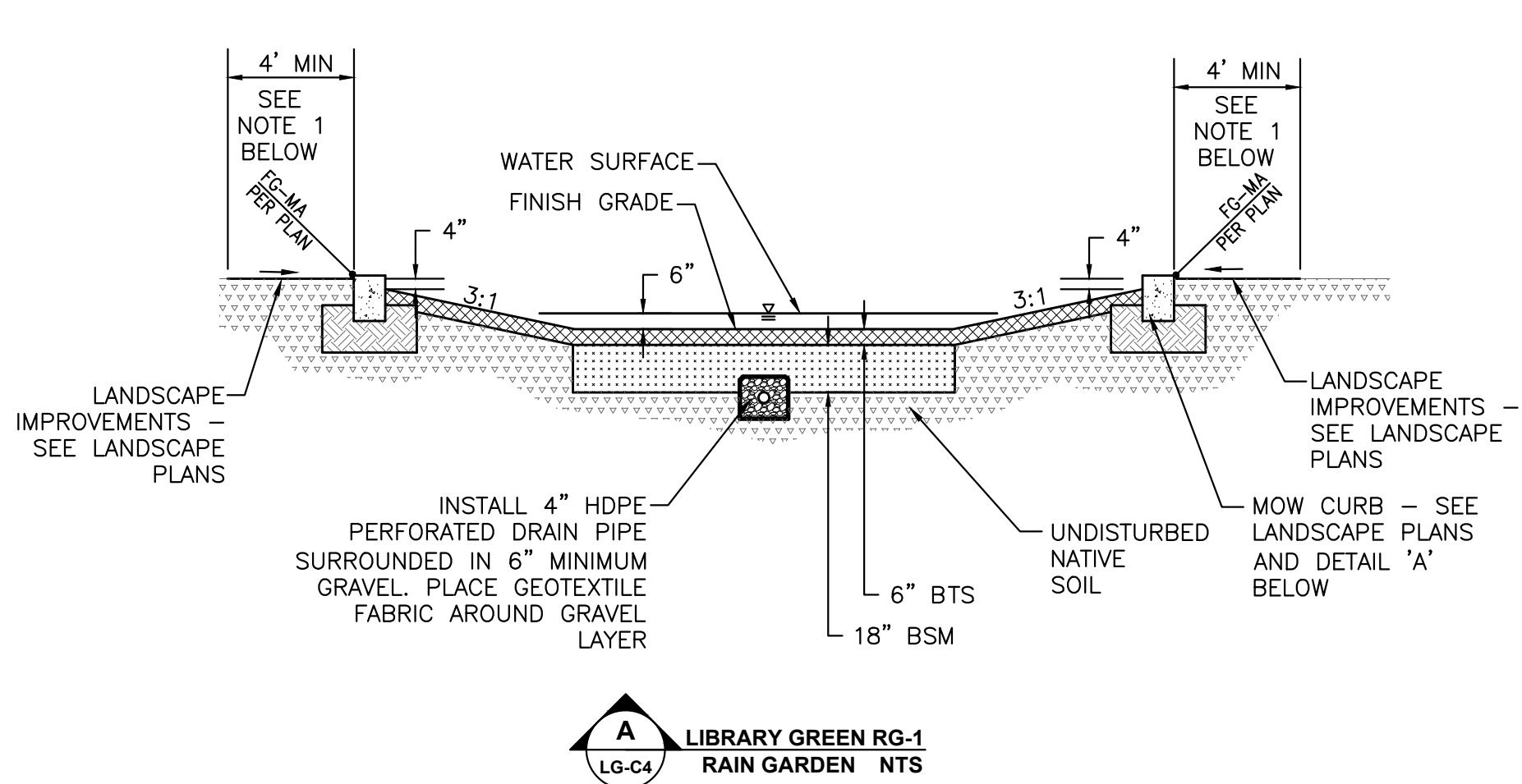
■ Davis Office
2840 Spafford Street, Suite 200
Davis, CA 95618
(530) 758-2026

■ Sacramento Office
2120 9th Street, Suite Three
Sacramento, CA 95818
(916) 455-2026

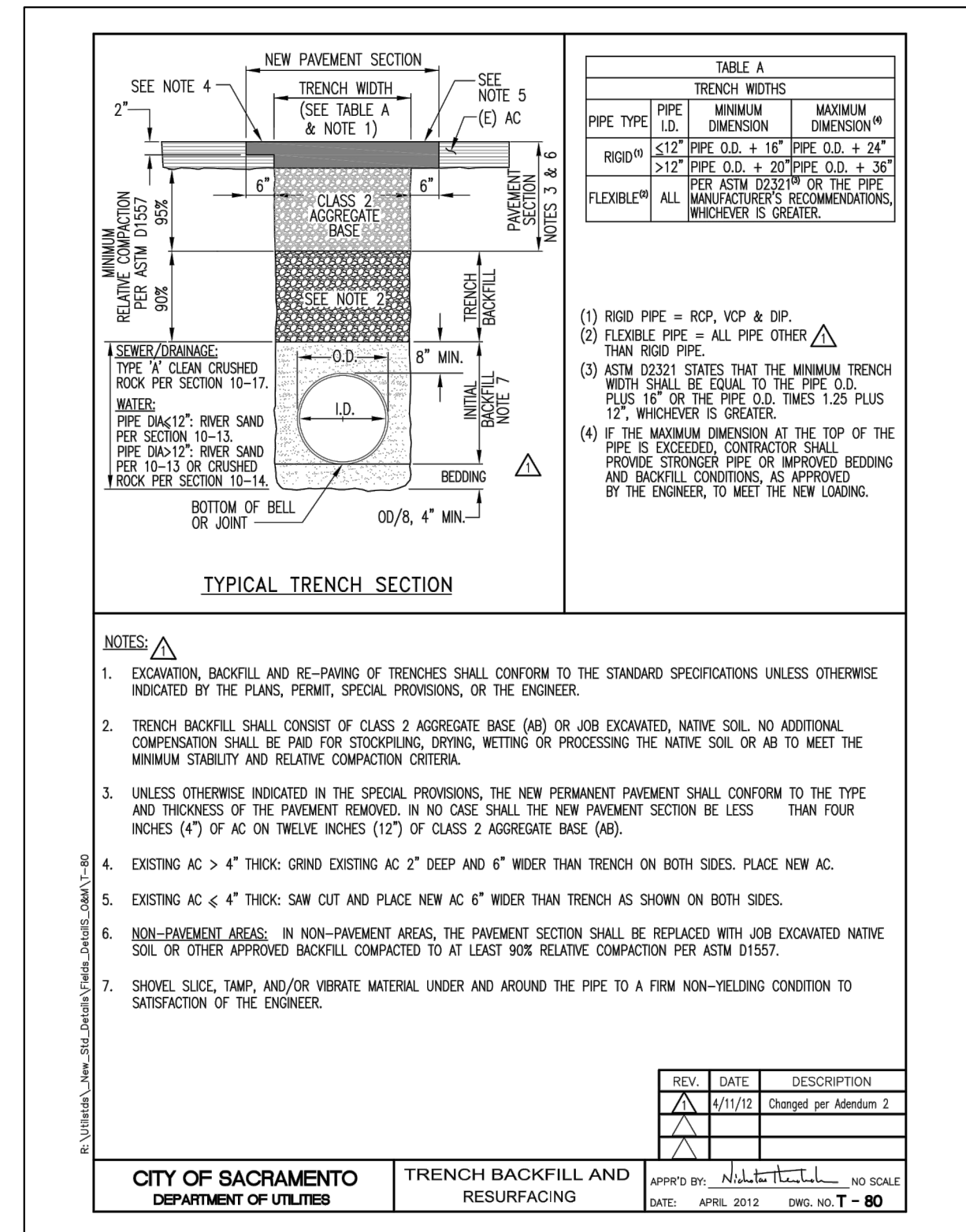
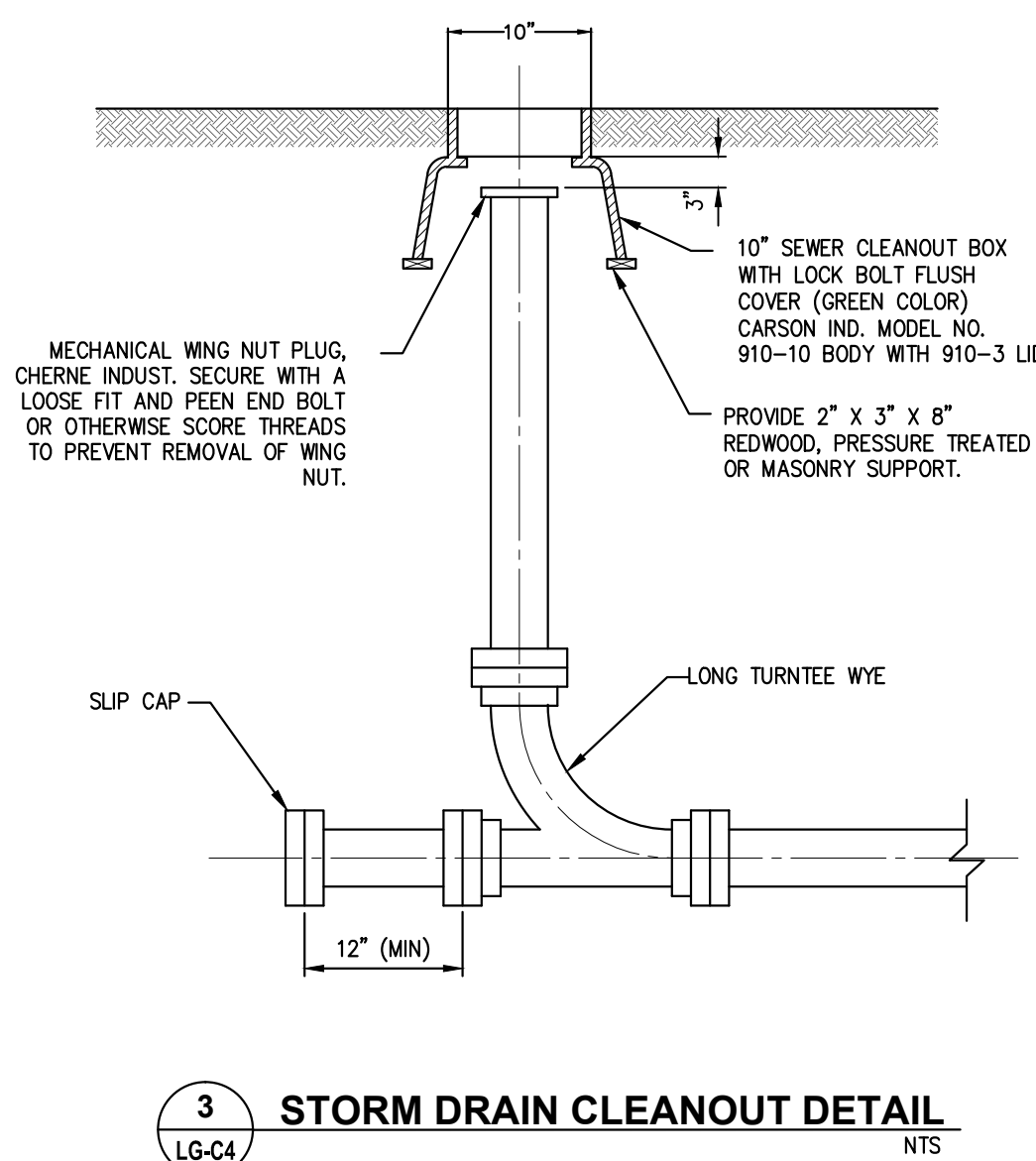
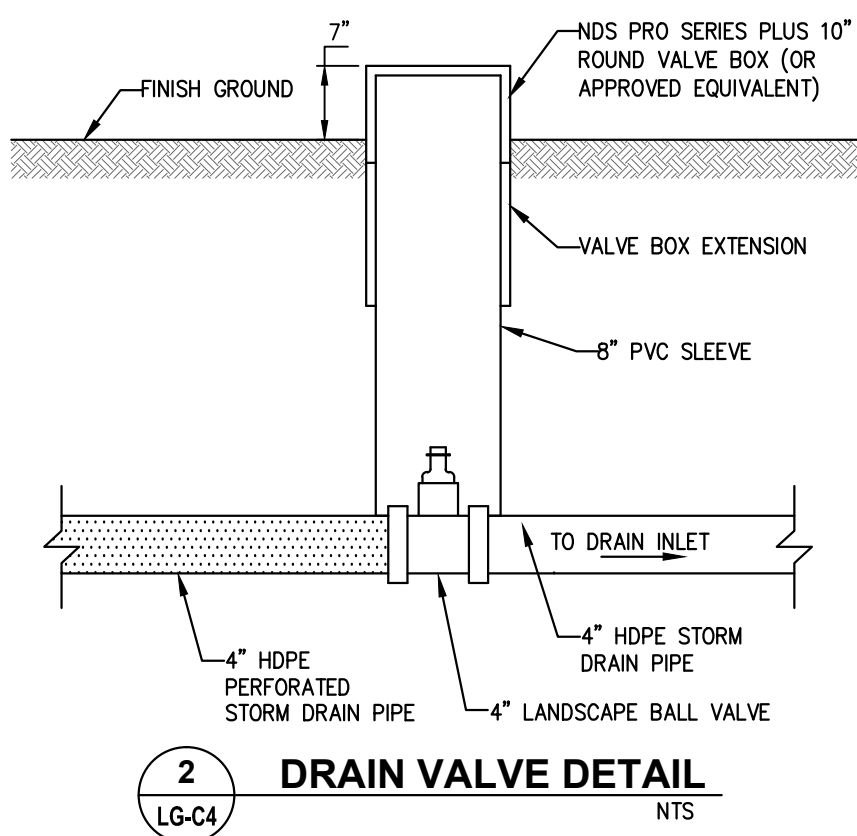
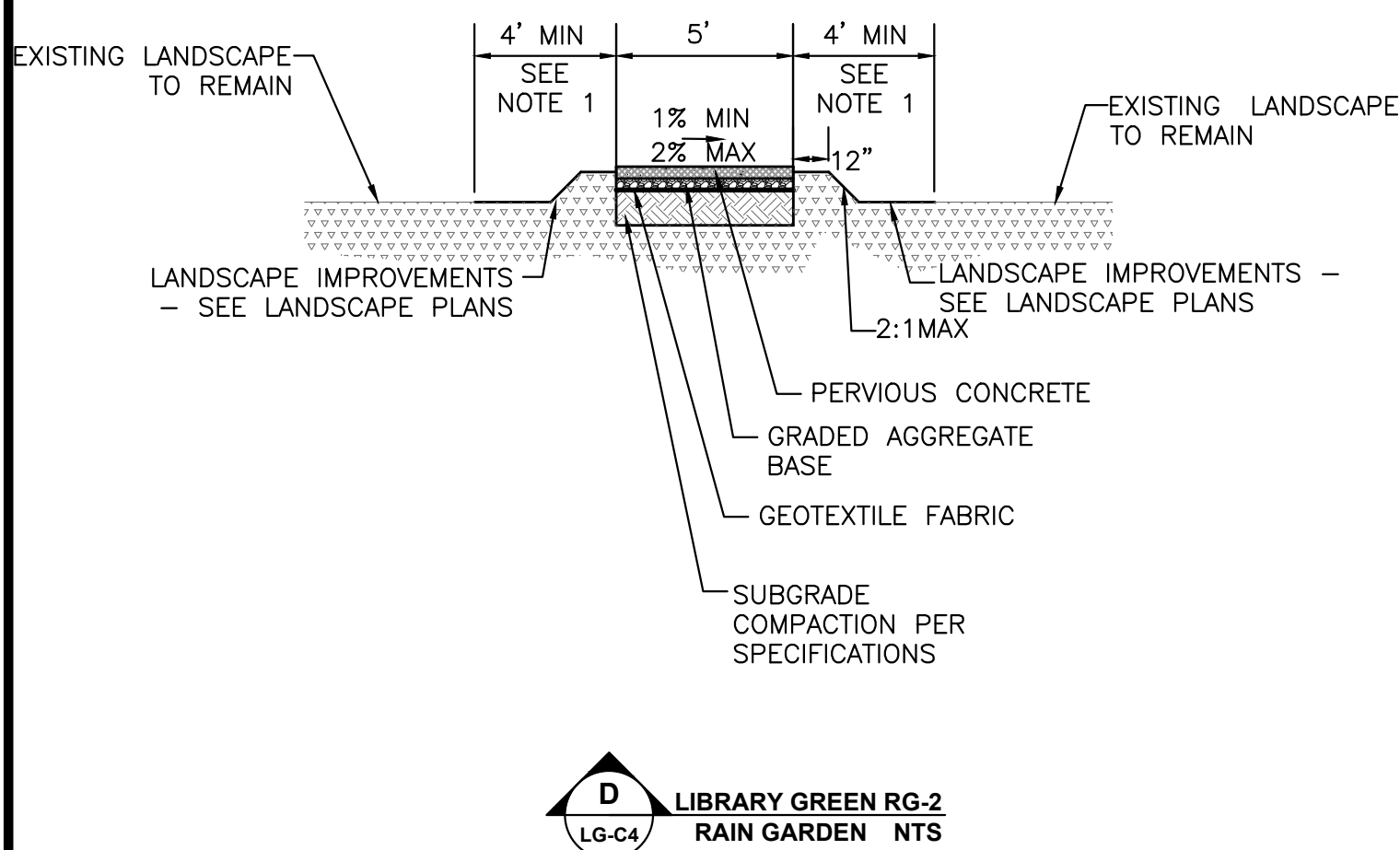
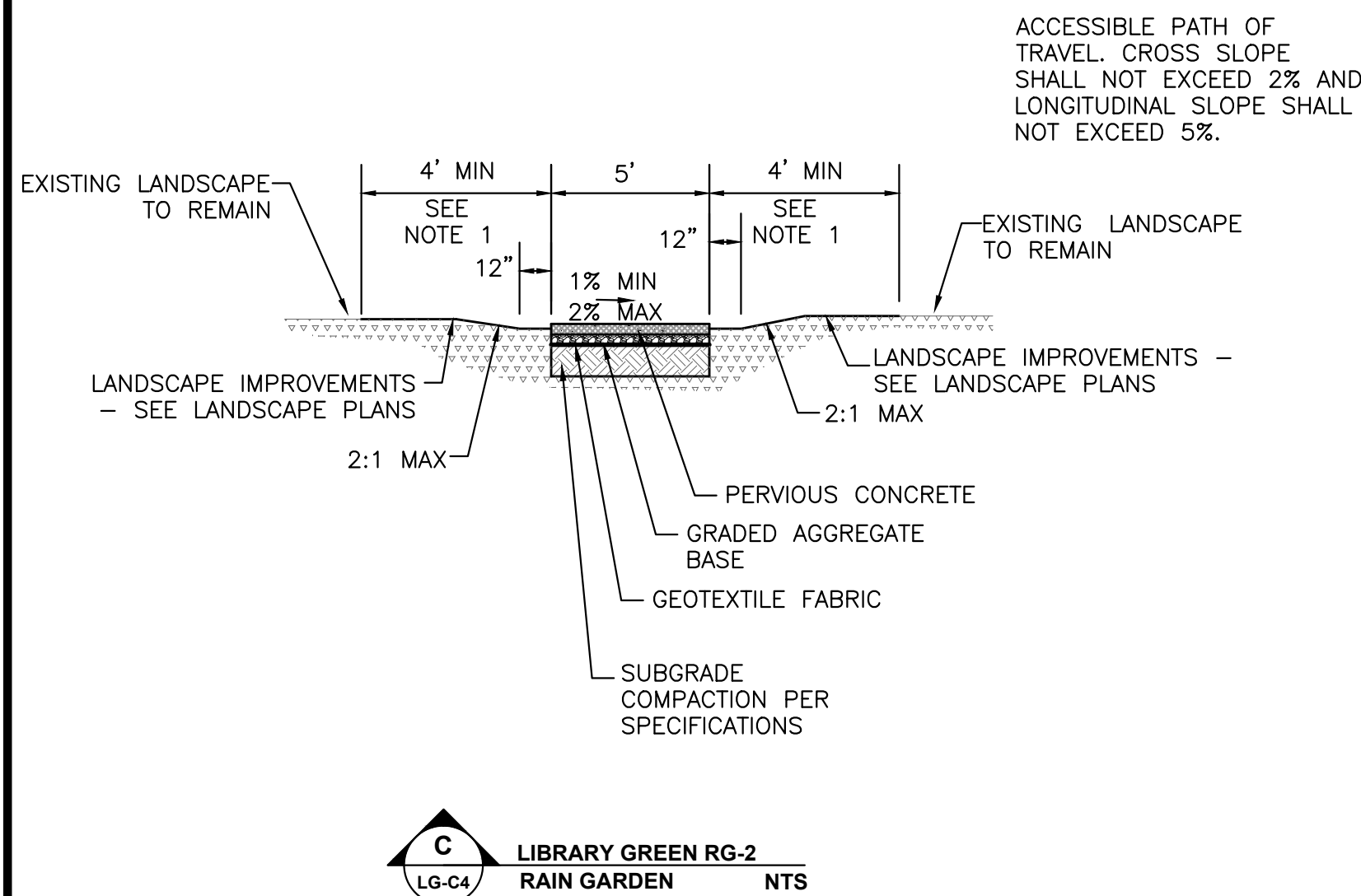
CUNNINGHAM ENGINEERING

NO.	DATE	REVISIONS	BY	APPD.	DESIGNED BY	NC
					DRAWN BY	NC
					CHECKED BY	DF
					SCALE	
					1" = 30'	





NOTES
1. LIMITS OF LANDSCAPE REMOVAL AND REPLACEMENT SHOWN ON THESE PLANS ARE APPROXIMATE. CONTRACTOR SHALL INCREASE LIMITS AS NEEDED BASED ON ACTUAL FIELD CONDITIONS AND CONTRACTOR'S METHOD OF CONSTRUCTION.



NOTES:
1. CONTRACTOR SHALL VARY WIDTH OF TRENCH AS NEEDED FOR IRRIGATION TRENCHING.
2. CONTRACTOR SHALL INSTALL A CONTINUOUS, NON-METALLIC PLASTIC FILM, WARNING TAPE OVER UTILITY PIPE WITH APPROPRIATE MARKINGS AND COLORS BASED ON UTILITY TYPE.

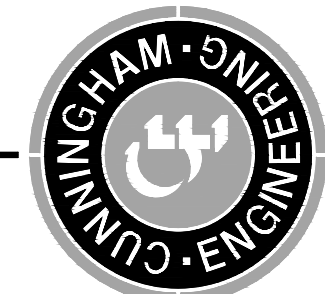
DATE SIGNED: _____
THESE DRAWINGS ARE NOT CONSIDERED FINAL UNTIL THE ENGINEER'S SEAL BELOW HAS BEEN SIGNED AND DATED.



CONSTRUCTION DOCUMENTS
CSUS LID STORMWATER SYSTEM
LIBRARY GREEN SECTIONS & DETAILS

SHEET
LG-C6
OF
6
DATE: 4/24/2015
JOB NO: 1432.01

CECWEST.COM
Project Planning • Civil Engineering • Landscape Architecture
Davis Office
2940 Spafford Street, Suite 200
Davis, CA 95618
(530) 758-2026
Sacramento Office
2120 20th Street, Suite Three
Sacramento, CA 95818
(916) 455-2026



CALIFORNIA

CALIFORNIA STATE UNIVERSITY, SACRAMENTO

S:\Projects\1400\1432 CSUS - LID Storm Water System\AutoCAD\1432-01-Civil_C06.dwg - 12:35PM Plotted by: chlois