

**AMERICAN RIVER BASIN STORMWATER RESOURCE PLAN  
CALL FOR PROJECTS & PROGRAMS  
REGIONAL COLLABORATION FOR MULTI-BENEFIT PROJECTS**

**What:** Stakeholders within the American River Basin (ARB) are collaborating to develop a Stormwater Resource Plan (SWRP). The plan will describe how to develop projects and programs to capture and use stormwater and dry weather runoff as a resource, with the intent of achieving multiple benefits throughout the region’s watersheds. Possible benefits include improving water quality, increasing water supply, reducing flood risks, protecting the environment, and enhancing communities.

**Where:** The ARB region encompasses Sacramento County, west Placer County, and a portion of east El Dorado County. (See attached figure.) The region was defined during development of the ARB Integrated Regional Water Management Plan (IRWMP), which coordinates management of water and related resources to maximize economic and societal benefits and maintain the sustainability of vital ecosystems.

**Why:** Stormwater and dry weather runoff can contribute to flooding, pollution of water bodies, and damage to environmental habitat. Capture and use of stormwater can prevent and/or mitigate these impacts, as well as supplement water supply. These practices can be integrated with other regional watershed stewardship and water management efforts to plan and implement projects and programs that take into account the many needs of and demands on a watershed. This can result in projects and programs that provide multiple benefits such as improving water quality, increasing water supply, reducing flood risks, protecting environmental habitat and public health, and enhancing communities. In addition, projects and programs that align with the SWRP can be eligible for certain future state loans and grants.

**Who:** Development of the SWRP is being led by the Office of Water Programs at California State University, Sacramento. Stakeholder meetings will be held throughout spring 2018. A list of project collaborators is tabulated below.

Collaborating Entities	
City of Auburn	Placer County
City of Citrus Heights	Cosumnes Coalition/Trout Unlimited
City of Elk Grove	Elk Grove Water Service/Florin Resource Conservation District
City of Folsom	Office of Water Programs at California State University, Sacramento
City of Lincoln	Sacramento Area Flood Control Agency
City of Rancho Cordova	Sacramento Central Groundwater Authority
City of Rocklin	Sacramento Regional County Sanitation District (Regional San)
City of Roseville	Sacramento Stormwater Quality Partnership
City of Sacramento	Valley Foothill Watersheds Collaborative
Town of Loomis	Regional Water Authority
County of Sacramento	

If you would like to participate in any of the meetings, be included on our distribution list, or learn more, please contact Maureen Kerner (see contact information below).

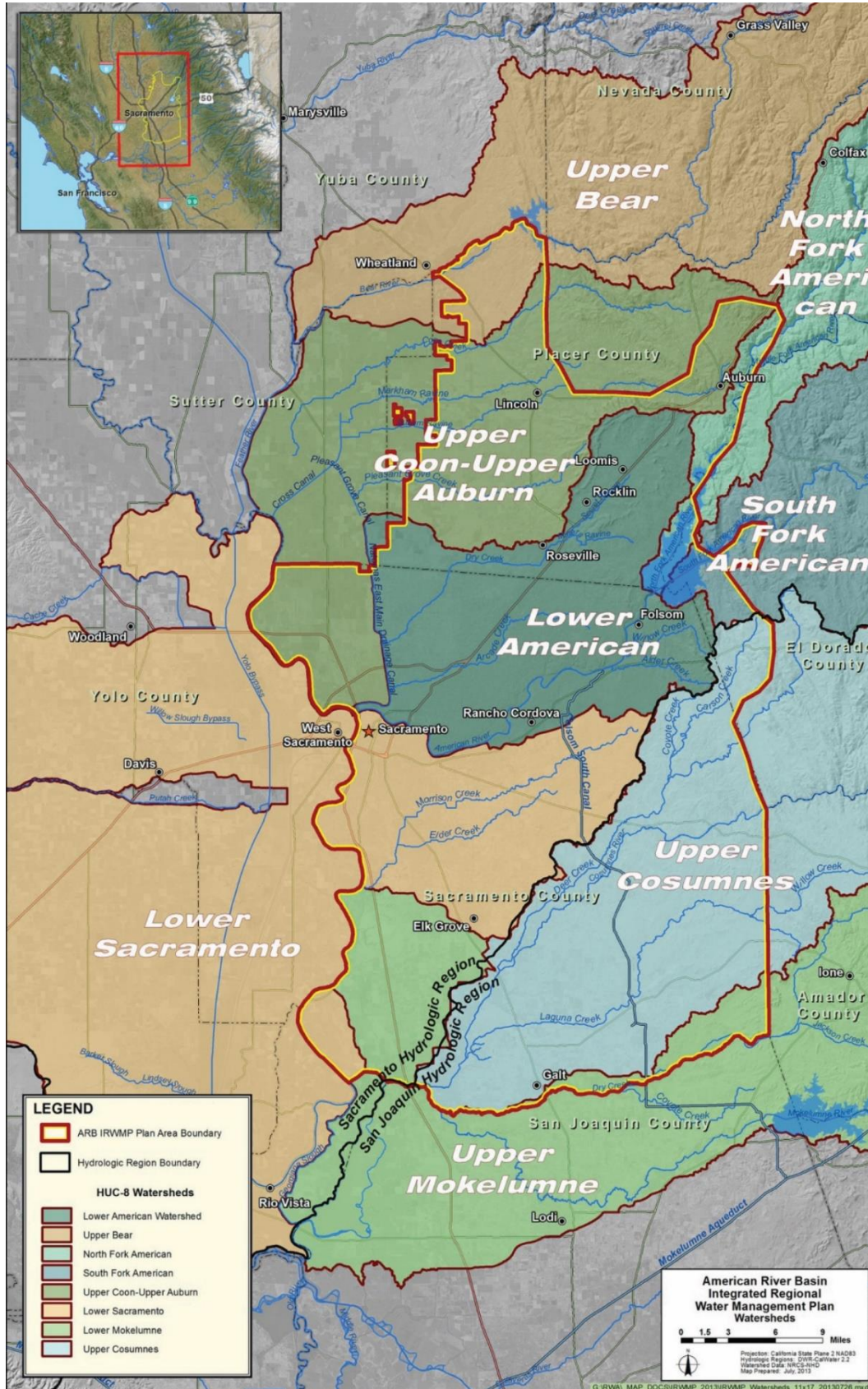
**How:** Have a project or program to propose? Please contact:

Maureen Kerner, P.E.  
916-945-6246

Office of Water Programs at Sacramento State  
[Maureen.kerner@owp.csus.edu](mailto:Maureen.kerner@owp.csus.edu)

**When:** For your project or program to be included in the hard copy of the Final SWRP, project information must be submitted by **April 30, 2018**. However, projects and programs can be “virtually” added to the plan any time after this date by entering project information into the Regional Water Authority’s (RWA) On-line Planning Tool Information (OPTI) center (<http://irwm.rmcwater.com/rwa/login.php>).

**AMERICAN RIVER BASIN STORMWATER RESOURCE PLAN  
CALL FOR PROJECTS & PROGRAMS  
REGIONAL COLLABORATION FOR MULTI-BENEFIT PROJECTS**



The American River Basin (ARB) Region